



WEAR THE BEST™

STOCK 2019

CONTENTS

PTS STOCK	2-5
ON-FIELD	6-11
UMPIRE-OFFICIAL	12-13
SIDELINE	14-17
MESH BACK	18-29
LIFESTYLE	30-45
ACTIVE	30-33
STRUCTURED	34-35
UNSTRUCTURED	36-40
STREET	41-45
OUTDOOR	46-53
LIFESTYLE	46-49
PERFORMANCE	49-53
CAMO	54-63
WOMEN	64-69
BEANIES/KNITS	70-82
VISORS	83-86
BRIMMED	87-89
R-SERIES	90-95

SHAPE



HI-PRO SHAPE
Retro crown shape with tall front panels and sloped back panels.



FULL-PRO SHAPE
A traditional Pro Pattern with full shaped front and back panels.



MID-PRO SHAPE
Our standard Pro Pattern with slightly rounded crown shape.



CASUAL STRUCTURED
Lower profile crown shape with buckram lined front panels.



RELAXED UNSTRUCTURED
Low profile, relaxed crown shape without structure.

FUNCTION



Performance fabric for wicking sweat.



Lightweight performance fabric for wicking sweat.

SIZE

FITTED	R-FLEX		ADJUSTABLE	INCHES	CM
6 3/8 *				20	51
6 1/2 *				20 3/8	52
6 5/8	XS-SM <small>PTS20 & 40 ONLY</small>	XS-SM	SMALL	20 3/4	53
6 3/4				21 1/4	54
6 7/8		21 5/8		55	
7		22		56	
7 1/8		22 3/8		57	
7 1/4			22 3/4	58	
7 3/8	LG-XL		MED-LG	23 1/8	59
7 1/2				23 1/2	60
7 5/8		23 7/8		61	
7 3/4		24 1/4		62	
7 7/8		24 5/8		63	
8			25	64	

* Size 6 3/8 and 6 1/2 not available in Fitted Caps
** Youth size available in PTS20 only.

NEW IN 2019

WEAR THE BEST™

PTS20M

PAGE: 3

PULSE 



OUTDOOR LINE

PAGES: 46-53



RICHARDSON STREET

PAGES: 41-45



MOSSY OAK

PAGES: 54-63





PTS PERFORMANCE TEAM SERIES

Designed for players, by players.

PTS20 R-FLEX

FIT: R-FLEX
SIZE: XS-SM (6%⁻7), SM-MD (7-7¼), LG-XL (7¾-7⅝)
SHAPE: MID-PRO
FABRIC: PERFORMANCE STRETCH
VISOR: UFORM
S-BAND: STAY-DRI PERFORMANCE

PULSE



DECORATION:
3D EMBROIDERY

SOLID COLORS: Undervisor is Charcoal. [Y] = Available in youth sizes.



COMBINATION COLORS: First color is crown and eyelets. Second color is visor and button. Eyelets on White, Grey, and Charcoal crowns match visor and button. Undervisor is Charcoal. [Y] = Available in youth sizes.



ALTERNATE COLORS: First color is crown front panels. Second color is crown back panels, visor, eyelets, and button. White front panels have White eyelets. Undervisor is Charcoal. [Y] = Available in youth sizes.



CONTRASTING COLORS: First color is crown and visor. Second color is eyelets and button. Undervisor is Charcoal.



DECORATION:
3D EMBROIDERY

PTS20Y

SIZE: Y (6%-6½)
[Y] = AVAILABLE YOUTH COLORS



PTS20M NEW SPORTMESH R-FLEX AVAILABLE LATE WINTER 2018/19

FIT: R-FLEX
SIZE: XS-SM (6 $\frac{5}{8}$ -7), SM-MD (7-7 $\frac{1}{4}$), LG-XL (7 $\frac{3}{8}$ -7 $\frac{7}{8}$)
SHAPE: MID-PRO
FABRIC: PERFORMANCE STRETCH/SPORTMESH
VISOR: UFORM
S-BAND: STAY-DRI PERFORMANCE

PULSE 



DECORATION:
3D EMBROIDERY

SOLID COLORS: Undervisor is Charcoal.



COMBINATION COLORS: First color is crown and eyelets. Second color is visor and button. Undervisor is Charcoal.



ALTERNATE COLORS: First color is crown front panels. Second color is crown back mesh panels, visor, and button. Undervisor is Charcoal.



PTS65 FITTED

FIT: 12 FITTED SIZES
SIZE: IN $\frac{1}{8}$ INCREMENTS 6 $\frac{1}{2}$ - 8
SHAPE: FULL-PRO
FABRIC: PERFORMANCE POLY-SERGE
VISOR: UFORM
S-BAND: STAY-DRI PRO TWILL

SURGE 



DECORATION:
3D EMBROIDERY

SOLID COLORS: Undervisor is Charcoal.



PTS30 R-FLEX

FIT: R-FLEX
SIZE: XS-SM (6 $\frac{5}{8}$ -7), SM-MD (7-7 $\frac{1}{4}$), LG-XL (7 $\frac{5}{8}$ -7 $\frac{7}{8}$)
SHAPE: MID-PRO
FABRIC: PERFORMANCE STRETCH
VISOR: UFORM
S-BAND: STAY-DRI PERFORMANCE

LITE...



DECORATION:
3D EMBROIDERY

SOLID COLORS: Undervisor is Charcoal.



COMBINATION COLORS: First color is crown and eyelets. Second color is visor and button. Undervisor is Charcoal.



ALTERNATE COLORS: First color is crown front panels and eyelets. Second color is crown back panels, visor, and button. Undervisor is Charcoal.



SPLIT COLORS: First color is crown front panels, visor, and eyelets. Second color is crown back panels and button. Undervisor is Charcoal.



PTS40 R-FLEX

FIT: R-FLEX
SIZE: XS-SM (6 $\frac{1}{2}$ -7), SM-MD (7-7 $\frac{1}{4}$), LG-XL (7 $\frac{3}{4}$ -7 $\frac{7}{8}$)
SHAPE: FULL-PRO
FABRIC: PERFORMANCE STRETCH
VISOR: UFORM
S-BAND: STAY-DRI PERFORMANCE

DRYVE 



DECORATION:
3D EMBROIDERY

SOLID COLORS: Undervisor is Charcoal.



COMBINATION COLORS: First color is crown and eyelets. Second color is visor and button. Eyelets on White, Grey, and Charcoal crowns match visor and button. Undervisor is Charcoal.



ALTERNATE COLORS: First color is crown front panels. Second color is crown back panels, visor, eyelets, and button. White front panels have White eyelets. Undervisor is Charcoal.



CONTRASTING COLORS: First color is crown and visor. Second color is eyelets and button. Undervisor is Charcoal.



ON-FIELD

Caps built for the game.

514 SURGE ADJUSTABLE

FIT: ADJUSTABLE HOOK-AND-LOOP
SIZE: SM (6½-7½), MD-LG (7-7¾)
SHAPE: MID-PRO
FABRIC: PERFORMANCE POLY-SERGE
VISOR: PRECURVED
S-BAND: COTTON



DECORATION:
3D EMBROIDERY

SOLID COLORS: Undervisor is Grey.



COMBINATION COLORS: First color is crown and eyelets. Second color is visor and button. Eyelets on White crowns match visor and button. Undervisor is Grey.



CONTRASTING COLORS: First color is crown and visor. Second color is button and eyelets. Undervisor is Grey. Contrasting colors are not available in size Small; size MD-LG only.



172 PULSE SPORTMESH R-FLEX

FIT: R-FLEX
SIZE: XS-SM (6 $\frac{3}{8}$ -7), SM-MD (7-7 $\frac{1}{4}$), LG-XL (7 $\frac{3}{8}$ -7 $\frac{5}{8}$)
SHAPE: MID-PRO
FABRIC: PERFORMANCE STRETCH/SPORTMESH
VISOR: PRECURVED
S-BAND: COMFORT STRETCH



DECORATION:
3D EMBROIDERY

CONTRASTING COLORS: First color is cap and undervisor. Second color is crown piping, button, and sandwich visor insert.



COMBINATION COLORS: First color is crown, sandwich visor insert, and eyelets. Second color is visor, undervisor, crown piping, and button.



SPLIT COLORS: First color is crown front panels, button, eyelets, visor, and undervisor. Second color is crown back mesh panels, crown piping, sandwich visor insert, and contrast stitching on visor and crown front panels.



TRI-COLORS: First color is crown front panels, eyelets, sandwich visor insert, and contrast stitching on crown back mesh panels. Second color is crown back mesh panels. Third color is crown piping, button, visor, and undervisor. White contrast stitching on visor and crown front panels. Charcoal back caps have white contrast stitching on visor and crown. White front caps have white contrast stitching on visor and crown back mesh panels.



ON-FIELD

185 TWILL R-FLEX

FIT: R-FLEX
SIZE: XS-SM (6½-7), SM-MD (7-7¼), LG-XL (7¾-7⅞)
SHAPE: MID-PRO
FABRIC: COTTON-POLY STRETCH
VISOR: PRECURVED
S-BAND: COMFORT STRETCH



DECORATION:
3D EMBROIDERY

SOLID COLORS: Undervisor is Grey.



COMBINATION COLORS: First color is crown and eyelets. Second color is visor and button. Eyelets on White crowns match visor and button. Undervisor is Grey.



ALTERNATE COLORS: First color is crown front panels. Second color is crown back panels, visor, eyelets, and button. White front panels have White eyelets. Undervisor is Grey.



UNIVERSITY OF TAMPA BASEBALL, 7X NATIONAL CHAMPIONS



585 WOOL BLEND R-FLEX

FIT: R-FLEX
SIZE: XS-SM (6 $\frac{1}{2}$ -7), SM-MD (7-7 $\frac{1}{4}$), LG-XL (7 $\frac{3}{8}$ -7 $\frac{7}{8}$)
SHAPE: MID-PRO
FABRIC: ACRYLIC-WOOL BLEND STRETCH
VISOR: PRECURVED
S-BAND: COMFORT STRETCH



DECORATION:
3D EMBROIDERY

SOLID COLORS: Undervisor is Grey.



COMBINATION COLORS: First color is crown and eyelets. Second color is visor and button. Undervisor is Grey.



165 PULSE/MESH R-FLEX

FIT: R-FLEX
SIZE: XS-SM (6 $\frac{1}{2}$ -7), SM-MD (7-7 $\frac{1}{4}$), LG-XL (7 $\frac{3}{8}$ -7 $\frac{7}{8}$)
SHAPE: MID-PRO
FABRIC: PERFORMANCE STRETCH/POLY MESH
VISOR: UFORM
S-BAND: COMFORT STRETCH



DECORATION:
3D EMBROIDERY

SPLIT COLORS: First color is crown front, visor, and eyelets. Second color is crown back panels. Third color is crown piping, button, and visor insert. Undervisor is charcoal.



414 PRO MESH ADJUSTABLE

FIT: HOOK-AND-LOOP BACKSTRAP | SIZE: SM (6½-7¼), MD-LG (7-7¾) | SHAPE: MID-PRO | FABRIC: PRO MESH | VISOR: PRECURVED | S-BAND: PRO TWILL



DECORATION:
EMBROIDERY W/
3D OUTLINE

SOLID COLORS: Undervisor is Grey.



COMBINATION COLORS: First color is crown and eyelets. Second color is visor and button. Eyelets on White crowns match visor and button. Undervisor is Grey.



495 PRO MESH R-FLEX

FIT: R-FLEX | SIZE: XS-SM (6½-7), SM-MD (7-7¼), LG-XL (7¾-8¾) | SHAPE: MID-PRO | FABRIC: PRO MESH STRETCH | VISOR: PRECURVED | S-BAND: COMFORT STRETCH



DECORATION:
3D EMBROIDERY

SOLID COLORS: Undervisor is Grey.



COMBINATION COLORS: First color is crown and eyelets. Second color is visor and button. Eyelets on White crowns match visor and button. Undervisor is Grey.



ALTERNATE COLORS: First color is crown front panels. Second color is crown back panels, visor, eyelets, and button. White front panels have White eyelets. Undervisor is Grey.



212 PRO TWILL SNAPBACK

FIT: ADJUSTABLE SNAPBACK | SIZE: SM (6½-7½), MD-LG (7-7¾) | SHAPE: MID-PRO | FABRIC: COTTON-POLY BLEND | VISOR: PRECURVED | S-BAND: COTTON



DECORATION:
3D EMBROIDERY

SOLID COLORS: Undervisor is Grey.



COMBINATION COLORS: First color is crown. Second color is visor, eyelets and button. Undervisor is Grey.



214 PRO TWILL HOOK-AND-LOOP

FIT: HOOK-AND-LOOP | SIZE: SM (6½-7½), MD-LG (7-7¾) | SHAPE: MID-PRO | FABRIC: COTTON-POLY BLEND | VISOR: PRECURVED | S-BAND: COTTON



DECORATION:
3D EMBROIDERY

SOLID COLORS: Undervisor is Grey.



UMPIRE

The bases are covered with our full line of baseball and softball umpire caps.



SURGE

FABRIC: PERFORMANCE POLY-SERGE
VISOR: PRECURVED
SHAPE: MID-PRO
SWEATBAND: STAY-DRI PERFORMANCE

MODEL NO.	FIT	VISOR LENGTH	STITCH ROWS
520	FITTED	1 1/2"	3
525	ADJUSTABLE	1 1/2"	3
530	FITTED	2"	4
533	R-FLEX	2"	4
535	ADJUSTABLE	2"	4
540	FITTED	2 1/2"	6
543	R-FLEX	2 1/2"	6
545	ADJUSTABLE	2 1/2"	6
550	FITTED	2 3/4"	8
555	ADJUSTABLE	2 3/4"	8

COLOR OPTIONS: Undervisor is cap color.



BLACK



NAVY



PRO MESH

FABRIC: PRO MESH
VISOR: PRECURVED
SHAPE: MID-PRO
SWEATBAND: COTTON/COMFORT STRETCH

MODEL NO.	FIT	VISOR LENGTH	STITCH ROWS
430s5	SYSTEM 5	2"	4
432	FITTED	2"	4
445	FITTED	2 1/2"	6
440s5	SYSTEM 5	2 3/4"	8
455	FITTED	2 3/4"	8

COLOR OPTIONS: Undervisor is cap color.



BLACK



NAVY

PULSE

FABRIC: PERFORMANCE STRETCH
VISOR: PRECURVED
SHAPE: MID-PRO
SWEATBAND: STAY-DRI PERFORMANCE

MODEL NO.	FIT	VISOR LENGTH	STITCH ROWS
633	R-FLEX	2"	4
643	R-FLEX	2 1/2"	6
653	R-FLEX	2 3/4"	8

COLOR OPTIONS: Undervisor is cap color.



BLACK



NAVY



SIZING CHART

FITTED: SIZES 6 3/4-8

SYSTEM 5 SIZING: NO.1 (6 5/8-6 3/4), NO. 2 (6 7/8-7), NO.3 (7 1/8-7 1/4), NO.4 (7 3/8-7 1/2), NO.5 (7 5/8-7 3/4)

R-FLEX: SM-MD (7-7 1/4), LG-XL (7 3/8-7 5/8)

ADJUSTABLE: HOOK-AND-LOOP BACKSTRAP MD-LG (7-7 3/4)



OFFICIAL

It's easy to make the right call with our selection of officials' caps.



SURGE

FABRIC: PERFORMANCE POLY-SERGE
VISOR: PRECURVED
SHAPE: MID-PRO
SWEATBAND: STAY-DRI PERFORMANCE

PRO MESH

FABRIC: PRO MESH
VISOR: PRECURVED
SHAPE: MID-PRO
SWEATBAND: COTTON/COMFORT STRETCH

PULSE

FABRIC: PERFORMANCE STRETCH
VISOR: PRECURVED
SHAPE: MID-PRO
SWEATBAND: STAY-DRI PERFORMANCE

MODEL NO.	FIT	COLOR
420	ADJUSTABLE	
425	FITTED	

Undervisor is cap color.



MODEL NO.	FIT	COLOR
453	R-FLEX	
457	R-FLEX	
465s5	SYSTEM 5	
467s5	SYSTEM 5	
475	FITTED	
477	FITTED	

Undervisor is cap color.

MODEL NO.	FIT	COLOR
485	R-FLEX	
487	R-FLEX	

Undervisor is cap color.



SIZING CHART

FITTED: SIZES 6 $\frac{3}{4}$ -8

SYSTEM 5 SIZING: NO.1 (6 $\frac{5}{8}$ -6 $\frac{3}{4}$), NO. 2 (6 $\frac{7}{8}$ -7), NO.3 (7 $\frac{1}{8}$ -7 $\frac{1}{4}$), NO.4 (7 $\frac{3}{8}$ -7 $\frac{1}{2}$), NO.5 (7 $\frac{5}{8}$ -7 $\frac{3}{4}$)

R-FLEX: SM-MD (7-7 $\frac{1}{4}$), LG-XL (7 $\frac{3}{8}$ -7 $\frac{5}{8}$)

ADJUSTABLE: HOOK-AND-LOOP BACKSTRAP
MD-LG (7-7 $\frac{3}{4}$)

SIDELINE

Rep your squad anywhere and everywhere.

163 LASER CUT FIVE PANEL TRUCKER

FIT: ADJUSTABLE SNAPBACK
SHAPE: MID-PRO
FABRIC: TWILL/POLY MESH
VISOR: PRECURVED
S-BAND: COTTON



DECORATION:
3D EMBROIDERY

TRI COLORS: First color is crown front panels, visor, and button. Second color is crown back mesh panels. Third color is underlay and undervisor.



174 PERFORMANCE TRUCKER

FIT: ADJUSTABLE SNAPBACK
SHAPE: CASUAL STRUCTURED
FABRIC: PTS LITE/SPORTMESH
VISOR: PRECURVED
S-BAND: STAY-DRI PERFORMANCE



DECORATION:
WOVEN PATCH

COLORS: First color is crown front panels, visor, eyelets, undervisor, and button. Second color is crown back mesh panels. Backstrap is two color, excluding Charcoal/Charcoal style.



439 TRIPLE COLOR R-FLEX

FIT: R-FLEX
SIZE: SM-MD (7-7¼), LG-XL (7½-7¾)
SHAPE: MID-PRO
FABRIC: NYLON BLEND STRETCH
VISOR: PRECURVED
S-BAND: COMFORT STRETCH



DECORATION:
STANDARD EMBROIDERY

COLORS:



402 R-ACTIVE LITE W/ CONTRAST PIPING

FIT: HOOK-AND-LOOP
SHAPE: CASUAL STRUCTURED
FABRIC: LIGHTWEIGHT PERFORMANCE
VISOR: PRECURVED
S-BAND: STAY-DRI



DECORATION:
POLY PRESS

COLORS: First color is crown, visor, undervisor, eyelets and button. Second color is crown/visor piping.



810 R-ACTIVE LITE WIDE BRIM HAT

FIT: ONE SIZE FITS MOST | SHAPE: WIDE BRIM | FABRIC: LTWT PERFORMANCE | VISOR: 2½" BRIM | S-BAND: STAY-DRI PERFORMANCE



DECORATION:
POLY PRESS

SOLID COLORS: All colorways have charcoal eyelets, undervisor, and edge trimming on brim.



177 STREAK CAMO

FIT: ADJ. HOOK-AND-LOOP | SHAPE: CASUAL STRUCTURED | FABRIC: COTTON-POLY | VISOR: PRECURVED | S-BAND: STAY-DRI



DECORATION:
3D EMBROIDERY

COLORS: Undervisor is Charcoal.



275 CHARCOAL FRONT W/ CONTRAST STITCHING

FIT: ADJ. HOOK-AND-LOOP | SHAPE: CASUAL STRUCTURED | FABRIC: 100% COTTON TWILL | VISOR: PRECURVED | S-BAND: COTTON



DECORATION:
3D EMBROIDERY

COLORS: First color is crown front panels, front eyelets, and visor. Second color is crown back panels, visor trim, button, back eyelets, and backstrap. All colorways have white contrast stitching. Undervisor is Charcoal.



112P PRINTED TRUCKER

FIT: ADJ. SNAPBACK | SHAPE: MID-PRO | FABRIC: TWILL/POLY MESH | VISOR: PRECURVED | S-BAND: COTTON



DECORATION:
EMBROIDERED PATCH

DIGITAL CAMO COLORS: First color is crown and visor camo, button, eyelets, undervisor, backstrap, and contrast stitching on back panels. Second color is crown back mesh panels.



Black/Charcoal Navy/Charcoal Red/Charcoal Royal/Charcoal

STREAK CAMO COLORS: First color is crown and visor camo, button, eyelets, undervisor, backstrap, and contrast stitching on crown back mesh panels. Second color is crown back mesh panels. **Backstrap is two color on Streak Camo.**



Black/Charcoal Charcoal/White Dark Green/Charcoal Navy/White

(VIEW ALL COLORWAYS ON PAGE 20)

178 DRYVE/CARBON FIBER PATTERN

FIT: ADJ. HOOK-AND-LOOP | SHAPE: CASUAL STRUCTURED | FABRIC: PERF MICRO MESH/POLYESTER | VISOR: PRECURVED | S-BAND: STAY-DRI



DECORATION:
3D EMBROIDERY

COLORS: All colorways have sublimated crown back and visor panels with black button and piping on crown front panels and visor. Undervisor is Charcoal.



Black Cardinal Charcoal Dark Green
Gold Maroon Orange Purple
Red Royal

245 CHAMPIONS CAP

FIT: ADJ. HOOK-AND-LOOP | SHAPE: CASUAL STRUCTURED | FABRIC: 100% COTTON TWILL | VISOR: PRECURVED | S-BAND: COTTON



DECORATION:
STANDARD EMBROIDERY

COLOR: Screen printed champions watermark on front panels. Champions woven label on backstrap. Undervisor is Charcoal.

MESH BACK

Classic trucker caps, on-trend styles.

112 TRUCKER

FIT: ADJUSTABLE SNAPBACK
SHAPE: MID-PRO
FABRIC: TWILL/POLY MESH
VISOR: PRECURVED
S-BAND: COTTON



SPLIT COLORWAY
DECORATION:
 LEATHER APPLIQUE

SPLIT COLORWAY
DECORATION:
 3D EMBROIDERY



TRI-COLORWAY
DECORATION:
 WOVEN PATCH



SOLID COLORWAY
DECORATION:
 RUBBER PATCH



ALT COLORWAY
DECORATION:
 WOVEN PATCH



112 COLOR OPTIONS

NEW COLORS AVAILABLE LATE WINTER 2018/19

TRI-COLORS: First color is crown front panels and eyelets. Second color is crown back mesh panels, backstrap, and contrast stitching on front panels, visor, and undervisor. Third color is visor and button.



SPLIT COLORS: First color is crown front panels, eyelets, visor, undervisor, and button. Second color is crown back mesh panels, backstrap, and contrast stitching on crown front panels and visor.



SOLID COLORS: Undervisor is cap color.



ALTERNATE COLORS: First color is crown front panels and eyelets. Second color is crown back mesh panels, backstrap, visor, undervisor, button, and contrast stitching on crown front panels.



MESH BACK

112P PRINTED TRUCKER

FIT: ADJUSTABLE SNAPBACK
 SHAPE: MID-PRO
 FABRIC: TWILL/POLY MESH
 VISOR: PRECURVED
 S-BAND: COTTON



DECORATION:
WOVEN LABEL

PLAID COLORS: First color is crown and visor plaid pattern, button, eyelets, undervisor, backstrap, and contrast stitching on crown back mesh panels. Second color is accent in plaid pattern. Third color is crown back mesh panels.



Black/Charcoal/White Charcoal/Col Blue/White Dark Green/Charcoal/White Grey/Charcoal/Charcoal Hot Pink/Black/White+ Khaki/Black/Brown Navy/Charcoal/White Red/Charcoal/White Royal/Charcoal/White Thyme Green/Toast/Khaki

ISLAND PRINT COLORS: First color is crown and visor island print, button, eyelets, undervisor, backstrap, and contrast stitching on crown mesh back panels. Second color is crown back mesh panels.



Black/White Brown/Khaki/Brown Charcoal/White Loden/Khaki/Khaki Navy/White Pink/White+ Red/White Royal/White

STREAK CAMO COLORS: First color is crown and visor camo, button, eyelets, undervisor, backstrap, and contrast stitching on crown back mesh panels. Second color is crown back mesh panels. **Backstrap is two color on Streak Camo.**



Black/Charcoal Charcoal/White Dark Green/Charcoal Navy/White Red/Charcoal Royal/Charcoal

MOSSY OAK CAMO COLORS: First color is crown and visor camo, button, and eyelets. Second color is crown back mesh panels, backstrap, and contrast stitching on front panels and visor.



Break-Up Country/Black NEW/SPRING 2019 Blades/Brown NEW/SPRING 2019

REALTREE CAMO COLORS: First color is crown and visor camo, button, and eyelets. Second color is crown back mesh panels, backstrap, and contrast stitching on front panels and visor.



Edge/Neon Pink+ NEW Edge/Neon Yellow NEW Edge/Neon Orange NEW Timber/Black NEW Original/Black NEW Max-1 XT/Brown NEW Edge/Brown NEW Fishing Light Blue/Navy NEW Realtree Xtra Pink/White+ NEW Max-5/Buck



Xtra/Neon Pink+ Xtra/Neon Yellow

KRYPTEK CAMO COLORS: First color is crown and visor camo, button, and eyelets. Second color is crown back mesh panels and contrast stitching on front panels and visor. **Kryptek Camo is 100% Polyester.**



Neptune/White NEW/SPRING 2019 Neptune/Black Highlander/Buck Inferno/Black Inferno/Blaze Orange Typhon/Black Typhon/Neon Orange Typhon/Neon Pink+ Typhon/Neon Yellow Pontus/White

MILITARY CAMO COLORS: First color is crown and visor camo, button, eyelets, undervisor, backstrap, and contrast stitching on back panels. Second color is crown back mesh.



Black Digital Camo/Charcoal Navy Digital Camo/Charcoal Red Digital Camo/Charcoal Royal Digital Camo/Charcoal Digital Camo/Light Green Green Camo/Black Green Camo/White

+ SMALL/LADIES SIZE ONLY.

112PM NEW PRINTED MESH TRUCKER

AVAILABLE LATE WINTER 2018/19

FIT: ADJUSTABLE SNAPBACK
SHAPE: MID-PRO
FABRIC: TWILL/POLY MESH
VISOR: PRECURVED
S-BAND: COTTON



DECORATION:
EMBROIDERED PATCH

COLORS: First color is crown front panels, eyelets, visor, undervisor, and button. Second color is crown back mesh panels. Backstrap color corresponds to crown back mesh panels.



112FP FIVE PANEL TRUCKER

FIT: ADJUSTABLE SNAPBACK
SHAPE: MID-PRO
FABRIC: TWILL/POLY MESH
VISOR: PRECURVED
S-BAND: COTTON



DECORATION:
WOVEN LABEL

NEW COLORS AVAILABLE LATE WINTER 2018/19

SPLIT COLORS: First color is crown front panels, eyelets, visor, undervisor, and button. Second color is crown back mesh panels, backstrap, and contrast stitching on front panels and visor.



MESH BACK

115 LOW PRO TRUCKER

FIT: ADJUSTABLE SNAPBACK
SIZE: SM, MD-LG
SHAPE: CASUAL STRUCTURED
FABRIC: TWILL/POLY MESH
VISOR: PRECURVED
S-BAND: COTTON



**NEW COLORS AVAILABLE
 LATE WINTER 2018/19**

SOLID COLORS: Undervisor is cap color.



Black Loden

DECORATION:
 EMBROIDERED PATCH

TRI-COLORS: First color is crown front panels and eyelets. Second color is back mesh panels and backstrap. Third color is visor and button.



Tan/Loden/Brown NEW White/Col Blue/Brown NEW White/Blue Hawaiian/Pale Orange NEW Heather Grey/Birch/Cardinal NEW Heather Grey/Birch/Army Olive NEW Spruce/Birch/Light Navy NEW Blue Teal/Birch/Navy Heather Grey/Birch/Amber Gold

SPLIT COLORS: First color is crown front panels, eyelets, visor, undervisor, and button. Second color is crown back mesh panels, and backstrap.



Black/Charcoal Black/White Black/Neon Pink Charcoal/Black Charcoal/White Charcoal/Red Smoke Blue/Aluminum Brown/Khaki Chocolate Chip/Grey-Brown Coffee/Claret
 Heather Grey/Dark Charcoal Cyan/Black Dark Loden/Jaffa Orange Hot Pink/Black Navy Heather/Light Grey Red Heather/Light Grey Dark Green Heather/Light Grey Royal Heather/Light Grey Banana/Birch Patina Green/Birch
 Lilac/Birch Peach/Birch Aruba Blue/Birch Navy/White Royal/White Red/White

115CH LOW PRO HEATHER TRUCKER

FIT: ADJUSTABLE SNAPBACK
SIZE: SM, MD-LG
SHAPE: CASUAL STRUCTURED
FABRIC: COTTON-POLY JERSEY/POLY MESH
VISOR: PRECURVED
S-BAND: COTTON



DECORATION:
 FAUX LEATHER APPLIQUE

SPLIT COLORS: First color is crown front panels, eyelets, visor, undervisor, and button. Second color is crown back mesh panels and backstrap.



Navy Heather/Navy Red Heather/Birch Green Teal Heather/Birch Black Heather/Black

111 GARMENT WASHED TRUCKER

FIT: ADJUSTABLE SNAPBACK
SHAPE: RELAXED UNSTRUCTURED
FABRIC: TWILL/POLY MESH
VISOR: PRECURVED
S-BAND: COTTON



DECORATION:
WOVEN PATCH

TRI-COLORS: First color is crown front panels and eyelets. Second color is crown back mesh panels, backstrap, and contrast stitching on crown front panels and visor. Third color is visor and button.



Col Blue/Charcoal/Navy Red/Charcoal/Black Stone/Black/Dark Green Stone/Black/Orange Stone/Black/Red Stone/Black/Royal White/Charcoal/Black

SPLIT COLORS: First color is crown front panels, eyelets, visor, undervisor, and button. Second color is crown back mesh panels, backstrap, and contrast stitching on crown front panels and visor.



Black/Charcoal Black/Khaki Black/White Brown/Khaki Capt Blue/Brown Charcoal/Neon Yellow Charcoal/White Col Blue/Khaki Dark Green/White Driftwood/Khaki
 Kelly/White Mango/Brown Navy/Khaki Navy/White Orange/White Pink/White+ Purple/White Red/Charcoal Red/White Royal/Charcoal
 Royal/White Texas Orange/Khaki + SMALL/LADIES SIZE ONLY.

111P GARMENT WASHED PRINTED TRUCKER

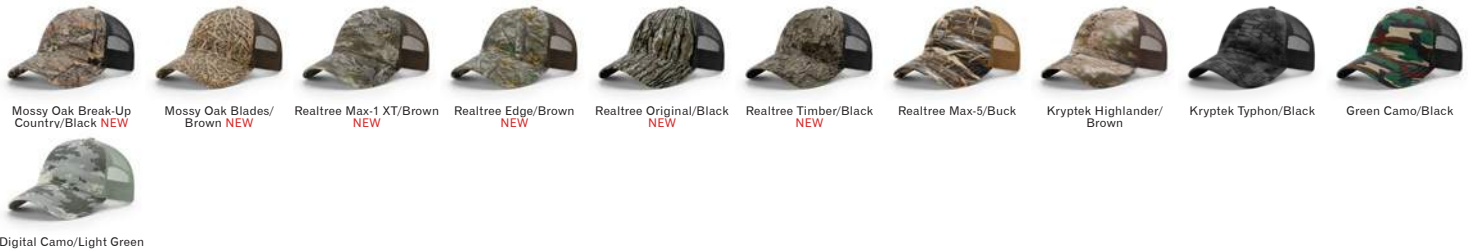
FIT: ADJUSTABLE SNAPBACK
SHAPE: RELAXED UNSTRUCTURED
FABRIC: TWILL/POLY MESH
VISOR: PRECURVED
S-BAND: COTTON



DECORATION:
SUBLIMATED PATCH

MOSSY OAK AVAILABLE SPRING 2019

COLORS: First color is crown and visor camo, button, and eyelets. Second color is crown, crown back mesh panels and contrast stitching.



Mossy Oak Break-Up Country/Black **NEW** Mossy Oak Blades/Brown **NEW** Realtree Max-1 XT/Brown **NEW** Realtree Edge/Brown **NEW** Realtree Original/Black **NEW** Realtree Timber/Black **NEW** Realtree Max-5/Buck Kryptek Highlander/Brown Kryptek Typhon/Black Green Camo/Black
 Digital Camo/Light Green

MESH BACK

110 TRUCKER R-FLEX

FIT: R-FLEX
SIZE: SM-MD (7-7¼), LG-XL (7¾-7⅝)
SHAPE: MID-PRO
FABRIC: TWILL/STRETCH POLY MESH
VISOR: PRECURVED
S-BAND: COMFORT STRETCH



DECORATION:
FELT APPLIQUE

SPLIT COLORS: First color is crown front panels, eyelets, visor, undervisor, button, and contrast stitching on crown back mesh panels. Second color is crown back mesh panels.



SOLID COLORS: Undervisor is cap color.



ALTERNATE COLORS: First color is crown front panels and eyelets. Second color is crown back mesh panels, visor, undervisor, and button.



CHARLES, INTERN | 110 TRUCKER R-FLEX

213 LOW PRO FOAMIE TRUCKER

FIT: ADJUSTABLE SNAPBACK
SHAPE: CASUAL STRUCTURED
FABRIC: FOAM/POLY MESH
VISOR: PRECURVED
S-BAND: COTTON



DECORATION:
SCREEN PRINT TRANSFER

ALTERNATE COLORS: First color is crown front panels. Second color is crown back mesh panels, visor, visor cord, backstrap, and button.



SPLIT COLORS: First color is crown front panels, visor, and button. Second color is crown back mesh panels and backstrap. Third color is visor cord.



113 FOAMIE TRUCKER

FIT: ADJUSTABLE SNAPBACK
SHAPE: STRUCTURED PINCH
FABRIC: FOAM/POLY MESH
VISOR: FLAT
S-BAND: COTTON



DECORATION:
SUBLIMATED TRANSFER

SOLID COLORS: Undervisor is cap color.



ALTERNATE COLORS: First color is crown front panels. Second color is crown back mesh panels, visor, visor cord, backstrap, and button.



TRI-COLORS: First color is crown front panels. Second color is crown back mesh panels. Third color is visor, visor cord, backstrap, and button.



MESH BACK

511 WOOL BLEND FLATBILL TRUCKER

FIT: ADJUSTABLE SNAPBACK
SHAPE: HI-PRO
FABRIC: ACRYLIC-WOOL BLEND/POLY MESH
VISOR: FLAT
S-BAND: COTTON



DECORATION:
WOVEN PATCH

NEW COLORS AVAILABLE LATE WINTER 2018/19

SOLID COLORS: Undervisor is cap color. **TRI-COLORS:** First color is crown front panels and eyelets. Second color is crown back mesh panels and backstrap. Third color is visor and button.



Black
NEW



Heather Grey/Birch/
Biscuit
NEW

SPLIT COLORS: First color is crown front panels, eyelets, visor, undervisor, backstrap, and button. Second color is crown back mesh panels.



Green Camo/Black
NEW



Heather Charcoal/White
NEW



Black/White



Charcoal/White



Dark Green/White



Heather Grey/Black



Khaki/Black



Loden/Black



Maroon/White



Navy/White



Purple/White



Red/Black



Red/White



Royal/White



Tiger Camo/Black



Black/Neon Orange



Black/Orange Sherbert



Black/Neon Yellow

168 7 PANEL TRUCKER

FIT: ADJUSTABLE SNAPBACK
SHAPE: HI-PRO 7 PANEL
FABRIC: TWILL/POLY MESH
VISOR: FLAT
S-BAND: COTTON



DECORATION:
SUBLIMATED PATCH

NEW COLORS AVAILABLE LATE WINTER 2018/19

SOLID, TRI, AND ALTERNATE COLORS:



Black/Green Camo/Loden
NEW



Charcoal/Black/White



Heather Grey/Black



Brown/Khaki



Black

SPLIT COLORS: First color is crown front panel, crown top panels, visor, undervisor, and button. Second color is crown back mesh panels and backstrap.



Charcoal/Old Gold
NEW



Pale Khaki/Loden
NEW



Khaki/Brown



Red/Black



Royal/Black



Charcoal/Black



Dark Green/Black

172 PULSE SPORTMESH R-FLEX

FIT: R-FLEX
SIZE: XS-SM (6 $\frac{5}{8}$ -7), SM-MD (7-7 $\frac{1}{4}$), LG-XL (7 $\frac{3}{8}$ -7 $\frac{5}{8}$)
SHAPE: MID-PRO
FABRIC: PERFORMANCE STRETCH/SPORTMESH
VISOR: PRECURVED
S-BAND: COMFORT STRETCH



DECORATION:
 METALLIC POLY PRESS

CONTRASTING COLORS: First color is cap and undervisor. Second color is crown piping, button, and sandwich visor insert.



COMBINATION COLORS: First color is crown, sandwich visor insert, and eyelets. Second color is visor, undervisor, crown piping, and button.



SPLIT COLORS: First color is crown front panels, button, eyelets, visor, and undervisor. Second color is crown back mesh panels, crown piping, sandwich visor insert, and contrast stitching on visor and crown front panels.



TRI-COLORS: First color is crown front panels, eyelets, sandwich visor insert, and contrast stitching on crown back mesh panels. Second color is crown back mesh panels. Third color is crown piping, button, visor, and undervisor. White contrast stitching on visor and crown front panels. Charcoal back caps have white contrast stitching on visor and crown. White front caps have white contrast stitching on visor and crown back mesh panels.



MESH BACK

174 PERFORMANCE TRUCKER

FIT: ADJUSTABLE SNAPBACK
SHAPE: CASUAL STRUCTURED
FABRIC: PTS LITE/SPORT MESH
VISOR: PRECURVED
S-BAND: STAY-DRI PERFORMANCE

LITE...

R-ACTIVE LT



DECORATION:
RUBBER PATCH

COLORS: First color is crown front panels, visor, eyelets, undervisor, and button. Second color is crown back mesh panels. Backstrap is two color, excluding Charcoal/Charcoal style.



222 R-ACTIVE LITE/AIRMESH TRUCKER

FIT: ADJUSTABLE HOOK-AND-LOOP
SHAPE: CASUAL STRUCTURED
FABRIC: LIGHTWEIGHT PERFORMANCE/AIRMESH
VISOR: PRECURVED
S-BAND: STAY-DRI

R-ACTIVE LT



DECORATION:
STANDARD EMBROIDERY

SOLID COLORS: Undervisor is cap color.



SPLIT COLORS: First color is crown front panels, eyelets, visor, undervisor, backstrap, and button. Second color is crown back mesh panels.



165 PULSE/MESH R-FLEX

FIT: R-FLEX
SIZE: XS-SM (6½-7), SM-MD (7-7¼), LG-XL (7¾-7⅝)
SHAPE: MID-PRO
FABRIC: PERF STRETCH/STRETCH POLY MESH
VISOR: UFORM
S-BAND: COMFORT STRETCH



DECORATION:
3D EMBROIDERY

COLORS: First color is crown front panels, eyelets, and visor. Second color is crown back mesh panels. Third color is visor insert, crown piping, and button. Undervisor is Charcoal.



162 STRIPED TRUCKER FLATBILL

FIT: ADJUSTABLE SNAPBACK
SHAPE: MID-PRO
FABRIC: NYLON BLEND/POLY MESH
VISOR: PRECURVED
S-BAND: COTTON



DECORATION:
SCREEN PRINTED PATCH

COLORS: Color is crown front stripes, button, and backstrap.



227 TECH MESH

FIT: D-RING ADJUSTABLE HOOK-AND-LOOP
SIZE: SM, LG-XL
SHAPE: CASUAL STRUCTURED
FABRIC: LIGHTWEIGHT PERFORMANCE/TECH MESH
VISOR: PRECURVED
S-BAND: STAY-DRI PERFORMANCE



DECORATION:
SUBLIMATED PATCH

SPLIT COLORS: First color is crown front, visor, button, back stripe, and backstrap. Second color is crown back mesh panels.



221 LASER VENTED R-ACTIVE LITE

FIT: D-RING ADJUSTABLE HOOK-AND-LOOP
SIZE: SM, LG-XL
SHAPE: RELAXED UNSTRUCTURED
FABRIC: LIGHTWEIGHT PERFORMANCE
VISOR: PRECURVED
S-BAND: STAY-DRI



DECORATION:
POLY PRESS

COLORS: First color is cap. Second color is visor/back panel binding.



225 STRUCTURED R-ACTIVE LITE

FIT: ADJUSTABLE HOOK-AND-LOOP
SHAPE: CASUAL STRUCTURED
FABRIC: LIGHTWEIGHT PERFORMANCE
VISOR: PRECURVED
S-BAND: STAY-DRI



DECORATION:
STANDARD EMBROIDERY

NEW COLORS AVAILABLE LATE WINTER 2018/19

SPLIT COLORS: First color is crown, eyelets, visor, and button. Second color is crown back panels and backstrap. Undervisor is Charcoal.



MATCHING VISOR 160 ON PAGE 85.

SOLID COLORS: Undervisor is Charcoal.



220 UNSTRUCTURED R-ACTIVE LITE

FIT: D-RING ADJUSTABLE HOOK-AND-LOOP
SHAPE: RELAXED UNSTRUCTURED
FABRIC: LIGHTWEIGHT PERFORMANCE
VISOR: PRECURVED
S-BAND: STAY-DRI



DECORATION:
EMBROIDERED PATCH

NEW COLORS AVAILABLE LATE WINTER 2018/19

SPLIT COLORS: First color is crown, eyelets, visor, and button. Second color is crown back panels and backstrap. Undervisor is Charcoal.



SOLID COLORS: Undervisor is Charcoal.



402 R-ACTIVE LITE W/ CONTRAST PIPING

FIT: ADJUSTABLE HOOK-AND-LOOP
SHAPE: CASUAL STRUCTURED
FABRIC: LIGHTWEIGHT PERFORMANCE
VISOR: PRECURVED
S-BAND: STAY-DRI



DECORATION:
 SUBLIMATED PATCH

SOLID COLORS: First color is crown, visor, undervisor, eyelets and button. Second color is crown/visor piping.



222 R-ACTIVE LITE/AIRMESH TRUCKER

FIT: ADJUSTABLE HOOK-AND-LOOP
SHAPE: CASUAL STRUCTURED
FABRIC: LIGHTWEIGHT PERFORMANCE/AIRMESH
VISOR: PRECURVED
S-BAND: STAY-DRI



DECORATION:
 STANDARD EMBROIDERY

COLORS: Undervisor is cap color.



COLORS: First color is crown front panels, button, backstrap, visor and undervisor. Second color is crown back mesh panels.



155 R-ACTIVE LITE TRAIL CAP

FIT: D-RING ADJ. HOOK-AND-LOOP | SHAPE: RELAXED UNSTRUCTURED | FABRIC: LTWT PERFORMANCE | VISOR: PRECURVED | S-BAND: STAY-DRI



DECORATION:
WOVEN PATCH

COLORS: First color is cap. Second color is undervisor, wrap, eyelets, and trim features.



158 LASER VENTED RUNNING CAP

FIT: D-RING ADJ. HOOK-AND-LOOP | SHAPE: 5 PANEL UNSTRUCTURED | FABRIC: LTWT PERFORMANCE | VISOR: PRECURVED | S-BAND: STAY-DRI



DECORATION:
POLY PRESS

SOLID COLORS: Trim color is Charcoal. Trim color on Charcoal cap is Black. Undervisor is Charcoal.



MATCHING VISOR 159 ON PAGE 85.

150 MESH PANEL RUNNING CAP

FIT: ADJ. HOOK-AND-LOOP | SHAPE: 5 PANEL UNSTRUCTURED | FABRIC: LTWT PERFORMANCE | VISOR: PRECURVED | S-BAND: STAY-DRI



DECORATION:
POLY PRESS

SOLID COLORS: First color is crown and visor. Second color is undervisor, visor wrap, backstrap and trim features.





LIFESTYLE

STRUCTURED Traditional fit meets contemporary style.

312 TWILL BACK TRUCKER

FIT: ADJUSTABLE SNAPBACK
SHAPE: MID-PRO
FABRIC: COTTON-POLY TWILL
VISOR: PRECURVED
S-BAND: COTTON



DECORATION:
FAUX LEATHER APPLIQUE

COLORS: First color is crown front panels, button, visor and undervisor. Second color is back panels and contrast stitching on front panels and visor.



TRI-COLORS: First color is crown front panels. Second color is back panels and contrast stitching on front panels and visor. Third color is visor, undervisor, and button.



309 DUCK CLOTH CANVAS

FIT: ADJUSTABLE HOOK-AND-LOOP
SHAPE: CASUAL STRUCTURED
FABRIC: CANVAS
VISOR: PRECURVED
S-BAND: COTTON



DECORATION:
EMBROIDERED PATCH

SOLID COLORS: Undervisor is cap color



203 VINTAGE BRUSHED CHINO

FIT: ADJUSTABLE HOOK-AND-LOOP
SHAPE: CASUAL STRUCTURED
FABRIC: BRUSHED CHINO TWILL
VISOR: PRECURVED
S-BAND: COTTON



DECORATION:
STANDARD EMBROIDERY

SOLID COLORS: Undervisor is cap color.



COMBINATION COLORS: First color is crown and eyelets. Second color is visor, undervisor, and button.



265 CHINO TWILL WAVE VISOR

FIT: ADJUSTABLE HOOK-AND-LOOP
SHAPE: CASUAL STRUCTURED
FABRIC: 100% COTTON TWILL
VISOR: PRECURVED
S-BAND: COTTON



DECORATION:
STANDARD EMBROIDERY

SOLID COLORS: First color is cap and undervisor. Second color is contrasting stitching, eyelets, and wave visor insert.





LIFESTYLE

UNSTRUCTURED Relaxed fits, dad hats, and more.

324 NEW

PIGMENT DYED AVAILABLE EARLY WINTER 2018/19

FIT: ADJ. CLOTH HIDEAWAY BACKSTRAP
SHAPE: RELAXED UNSTRUCTURED
FABRIC: CANVAS
VISOR: PRECURVED
S-BAND: COTTON



DECORATION:
ROPE STITCH EMBROIDERY

COLORS: Undervisor is cap color.



382 NEW

SNOW WASH AVAILABLE EARLY WINTER 2018/19

FIT: ADJ. CLOTH BACKSTRAP WITH COMFORT BUCKLE
SHAPE: RELAXED UNSTRUCTURED
FABRIC: CANVAS
VISOR: PRECURVED
S-BAND: COTTON



DECORATION:
STANDARD EMBROIDERY

COLORS: Undervisor is cap color.



320 WASHED CHINO

FIT: ADJ. CLOTH BACKSTRAP WITH COMFORT BUCKLE
SIZE: SM (6½-7½), MD-LG (7-7¾)
SHAPE: RELAXED UNSTRUCTURED
FABRIC: HEAVYWEIGHT CHINO TWILL
VISOR: PRECURVED
S-BAND: COTTON



DECORATION:
STANDARD EMBROIDERY

COLORS: Undervisor is cap color.



320T TODDLER CHINO

FIT: ELASTIC BACKSTRAP
SHAPE: RELAXED UNSTRUCTURED
FABRIC: HEAVYWEIGHT CHINO TWILL
VISOR: PRECURVED
S-BAND: COTTON



DECORATION:
STANDARD EMBROIDERY

COLORS: Undervisor is cap color.



321 HAND DIPPED TIE-DYE

FIT: ADJ. CLOTH BACKSTRAP WITH COMFORT BUCKLE
SIZE: SM, MD-LG
SHAPE: RELAXED UNSTRUCTURED
FABRIC: HEAVYWEIGHT CHINO TWILL
VISOR: PRECURVED
S-BAND: COTTON



DECORATION:
STANDARD EMBROIDERY

COLORS: Undervisor is cap color.



325 WASHED CHINO SANDWICH VISOR

FIT: ADJUSTABLE HOOK-AND-LOOP
SHAPE: RELAXED UNSTRUCTURED
FABRIC: HEAVYWEIGHT CHINO TWILL
VISOR: PRECURVED
S-BAND: COTTON



DECORATION:
STANDARD EMBROIDERY

COLORS: First color is crown, visor, undervisor, button and backstrap. Second color is contrast stitching and sandwich visor insert.



SPLIT COLORS: First color is crown front panels, visor, undervisor and button. Second color is crown back panels, contrast stitching and sandwich visor insert.



+ SMALL/LADIES SIZE ONLY.

330 WASHED CHINO POLO

FIT: ADJ. CLOTH HIDEAWAY BACKSTRAP
SHAPE: RELAXED UNSTRUCTURED
FABRIC: HEAVYWEIGHT CHINO TWILL
VISOR: PRECURVED
S-BAND: COTTON



DECORATION:
STANDARD EMBROIDERY

COLORS: Undervisor is Stone.



COLORS: Undervisor is Navy.



322 WASHED CHINO CHARCOAL

FIT: ADJUSTABLE HOOK-AND-LOOP
SHAPE: RELAXED UNSTRUCTURED
FABRIC: HEAVYWEIGHT CHINO TWILL
VISOR: PRECURVED
S-BAND: COTTON



DECORATION:
STANDARD EMBROIDERY

COLORS: First color is front panel. Second color is crown back panels, upper visor, and backstrap. Third color is button, eyelets, undervisor, edge wrap and sweatband. All caps have white contrast stitching.



ALTERNATE COLORS: First color is crown front panel, button, eyelets, undervisor, edge wrap and sweatband. Second color is crown back panels, upper visor and backstrap. Third color is contrast stitching.



+ SMALL/LADIES SIZE ONLY.

380 GARMENT DYED/WASHED

FIT: ADJ. CLOTH HIDEAWAY BACKSTRAP
SHAPE: RELAXED UNSTRUCTURED
FABRIC: HEAVYWEIGHT CHINO TWILL
VISOR: PRECURVED
S-BAND: COTTON



DECORATION:
3D EMBROIDERY

COLORS: Undervisor is cap color.



236 CHINO W/ LEATHER VISOR

FIT: ADJ. CLOTH HIDEAWAY BACKSTRAP
SHAPE: RELAXED UNSTRUCTURED
FABRIC: HEAVYWEIGHT CHINO TWILL
VISOR: PRECURVED
S-BAND: COTTON



DECORATION:
LEATHER APPLIQUE

COLORS: First color is crown, button, and eyelets. Second color is visor and undervisor.



510 WOOL FLATBILL SNAPBACK

FIT: ADJUSTABLE SNAPBACK
SHAPE: HI-PRO
FABRIC: ACRYLIC-WOOL BLEND
VISOR: FLAT
S-BAND: COTTON



DECORATION:
SUBLIMATED PATCH

NEW COLORS AVAILABLE LATE WINTER 2018/19

SOLID COLORS: Undervisor is Grey.



COMBINATION COLORS: First color is crown and eyelets. Second color is visor and button. Undervisor is Grey.



511 WOOL BLEND FLATBILL TRUCKER

FIT: ADJUSTABLE SNAPBACK
SHAPE: HI-PRO
FABRIC: ACRYLIC-WOOL BLEND/POLY MESH
VISOR: FLAT
S-BAND: COTTON



DECORATION:
SUBLIMATED PATCH

NEW COLORS AVAILABLE LATE WINTER 2018/19

SOLID COLORS: Undervisor is cap color.



Black
NEW

TRI-COLORS: First color is crown and eyelets. Second color is crown back mesh panels and backstrap. Third color is visor and button.



Heather Grey/Birch/
Biscuit
NEW

SPLIT COLORS: First color is crown front panels, eyelets, visor, undervisor, backstrap, and button. Second color is crown back mesh panels.



Green Camo/Black
NEW



Heather Charcoal/White
NEW



Black/White



Charcoal/White



Dark Green/White



Heather Grey/Black



Khaki/Black



Loden/Black



Maroon/White



Navy/White



Purple/White



Red/Black



Red/White



Royal/White



Tiger Camo/Black



Black/Neon Orange



Black/Orange Sherbert



Black/Neon Yellow



HANNAH, RETAIL | 252 PREMIUM COTTON DAD HAT

255 NEW PINCH FRONT STRUCTURED SNAPBACK

AVAILABLE LATE WINTER 2018/19

FIT: ADJUSTABLE SNAPBACK
 SHAPE: STRUCTURED PINCH
 FABRIC: TWILL
 VISOR: FLAT
 S-BAND: COTTON



DECORATION:
 SUBLIMATED PATCH

SOLID COLORS: Undervisor is cap color. [Y] = Available in youth sizes.



252 NEW PREMIUM COTTON DAD HAT

AVAILABLE LATE WINTER 2018/19

FIT: ADJ. CLOTH BACKSTRAP W/ COMFORT BUCKLE
 SHAPE: RELAXED UNSTRUCTURED
 FABRIC: PREMIUM COTTON TWILL
 VISOR: PRECURVED
 S-BAND: COTTON



DECORATION:
 STANDARD EMBROIDERY

SOLID COLORS: Undervisor is cap color. [Y] = Available in youth sizes.



213 LOW PRO FOAMIE TRUCKER

FIT: ADJUSTABLE SNAPBACK
SHAPE: CASUAL STRUCTURED
FABRIC: FOAM/POLY MESH
VISOR: PRECURVED
S-BAND: COTTON



DECORATION:
WOVEN PATCH

ALTERNATE COLORS: First color is crown front panels. Second color is crown back mesh panels, visor, visor cord, backstrap, and button.



White/Black/Black White/Navy/Navy

SPLIT COLORS: First color is crown front panels, visor, and button. Second color is crown back mesh panels, and backstrap. Third color is visor cord.



Black/Charcoal/Black Charcoal/Black/Black Cyan/White/Red Brown/Tan/Khaki Dark Olive/Tan/Khaki Red/White/Royal Kelly/White/Yellow

113 FOAMIE TRUCKER

FIT: ADJUSTABLE SNAPBACK
SHAPE: STRUCTURED PINCH
FABRIC: FOAM/POLY MESH
VISOR: FLAT
S-BAND: COTTON



DECORATION:
SUBLIMATED TRANSFER
WOVEN CLIP LABEL

SOLID COLORS: Undervisor is cap color.



Black Charcoal Navy

ALTERNATE COLORS: First color is crown front panels. Second color is crown back mesh panels, visor, visor cord, backstrap, and button.



White/Black White/Charcoal White/Navy White/Red

ALTERNATE COLORS: First color is crown front panels. Second color is crown back mesh panels, visor, visor cord, backstrap, and button.



White/Black/Royal White/Charcoal/Black White/Navy/Red White/Neon Blue/Black White/Neon Orange/Black White/Neon Yellow/Black White/Red/Black White/Orange Sherbert/Black

168 7 PANEL TRUCKER

FIT: ADJUSTABLE SNAPBACK
SHAPE: HI-PRO 7 PANEL
FABRIC: TWILL/POLY MESH
VISOR: FLAT
S-BAND: COTTON



DECORATION:
WOVEN PATCH

NEW COLORS AVAILABLE LATE WINTER 2018/19

SOLID, TRI, AND ALTERNATE COLORS:



Black/Green Camo/Loden NEW Charcoal/Black/White Heather Grey/Black Brown/Khaki Black

SPLIT COLORS: First color is crown front panel, crown top panels, visor, undervisor, and button. Second color is crown back mesh panels and backstrap.



Charcoal/Old Gold NEW Pale Khaki/Loden NEW Khaki/Brown Red/Black Royal/Black Charcoal/Black Dark Green/Black

257 **NEW** 7 PANEL TWILL STRAPBACK

AVAILABLE LATE WINTER 2018/19

FIT: ADJUSTABLE LEATHER SNAPBACK
SHAPE: HI-PRO 7 PANEL
FABRIC: TWILL
VISOR: FLAT
S-BAND: COTTON



DECORATION:
EMBROIDERED PATCH

SOLID COLORS: Undervisor is cap color.



Black Dark Loden

ALTERNATE COLORS: First color is crown front panel. Second color is crown top, crown back panels, visor, and button. [Y] = Available in youth sizes.



Charcoal/Heather Grey [Y] Pigeon/Navy

OUTDOOR LIFESTYLE

A call to adventure, the Richardson Outdoor line is inspired by the natural beauty that surrounds our HQ in Oregon.

No matter the places you play, we have your head covered.



931 NEW KOOSAH AVAILABLE LATE WINTER 2018/19

FIT: ADJUSTABLE NYLON WOVEN STRAPBACK
SHAPE: MID-PRO
FABRIC: COTTON
VISOR: PRECURVED
S-BAND: COTTON

Ripstop fabric with metal grommet eyelets – the perfect pairing to take on a day of watching the cascading water at Koosah Falls, hiking the picturesque McKenzie River Trail, and taking in the serene depths of Blue Pool. This is a cap you can wear anywhere and look good no matter the view.



DECORATION:
SUBLIMATED PATCH

SOLID COLORS: Undervisor is cap color.



930 NEW TROUTDALE AVAILABLE LATE WINTER 2018/19

FIT: ADJUSTABLE PLASTIC SNAPBACK
SHAPE: RELAXED UNSTRUCTURED
FABRIC: COTTON/POLY MESH
VISOR: PRECURVED
S-BAND: COTTON

Troutdale, the Gateway to the Gorge - It's halfway home to the city after a day packed with pictures of Multnomah Falls. With this cap, even hiking on pavement will make you feel like an adventurer.



DECORATION:
SUBLIMATED PATCH

SOLID COLORS: Undervisor is cap color. **SPLIT COLORS:** First color is crown front panels, button, visor, and undervisor. Second color is crown back mesh panels and snapback.



OUTDOOR LIFESTYLE

253 NEW TIMBERLINE AVAILABLE LATE WINTER 2018/19

FIT: ADJUSTABLE PLASTIC SNAPBACK
SHAPE: FULL-PRO
FABRIC: COTTON
VISOR: FLAT
S-BAND: COTTON

Located nearly 6,000 feet up Mt Hood, Timberline Lodge is one of Oregon's most famous landmarks. Keep your head warm when the mountain winds pick up with this twill-lined corduroy cap.



DECORATION:
EMBROIDERED PATCH

SOLID COLORS: Undervisor is cap color.



Black

Navy

Olive

Tan

256 NEW UMPQUA AVAILABLE LATE WINTER 2018/19

FIT: ADJUSTABLE PLASTIC SNAPBACK
SHAPE: FLIP-UP STAY PINCH
FABRIC: NYLON
VISOR: FLAT
S-BAND: COTTON

All year round you'll find Oregonians rafting, fishing, hiking, and more along the 111 miles of the Umpqua River. Flip-up buckram and a 5mm rope give this cap a unique look that's sure to turn heads both up and down stream.



DECORATION:
SUBLIMATED PATCH

SOLID COLORS: First color is crown, visor, undervisor, eyelets and button. Second color is crown and visor cord.



Black

Biscuit

Loden

Navy

Red

White

217 NEW MACLEAY AVAILABLE LATE WINTER 2018/19

FIT: ADJUSTABLE NYLON WOVEN STRAPBACK
SHAPE: 5 PANEL STRUCTURED
FABRIC: TWILL
VISOR: FLAT
S-BAND: COTTON

From the city, to Macleay Trail, to your favorite spot under the stars; this cap will get you there and keep you looking sharp. The lightweight cotton twill and stylish 5-panel construction make this the camper cap you'll keep coming back to.



DECORATION:
 SUBLIMATED LABEL
 W/ FELT APPLIQUE

SOLID COLORS: Undervisor is cap color. [Y] = Available in youth sizes.



Black [Y] Army Olive Berry Green Camo [Y] Heather Grey [Y] Light Navy

COMBINATION COLORS: First color is crown. Second color is visor and undervisor. [Y] = Available in youth sizes.



Dark Loden/Biscuit Heather Grey/Black [Y]

JUDY, INTERN | 935 ROGUE



935 NEW ROGUE AVAILABLE SPRING 2019

FIT: ADJUSTABLE NYLON WOVEN STRAPBACK
SHAPE: RELAXED UNSTRUCTURED
FABRIC: POLYESTER
VISOR: FLEX
S-BAND: STAY-DRI

Inspired by the majestic Rogue River - one of the eight original rivers protected by the Wild and Scenic Rivers Act of 1968 - the 935 features quick-drying fabric and breathable wide-set nylon mesh; making it the ideal choice for aquatic adventures and mid-summer hikes.

FEATURES:
 BREATHABLE NYLON PERFORMANCE SWEATBAND
 PACKABLE VISOR
 QUICK-ADJUST PACK WEBBING BACKSTRAP



DECORATION:
 FAUX LEATHER APPLIQUE

SOLID COLORS: Undervisor is cap color.



SPLIT COLORS: First color is crown front panels, button, visor and undervisor. Second color is crown back mesh panels.



936 NEW ASTORIA AVAILABLE SPRING 2019

FIT: R-FLEX
SIZE: SM-MD, LG-XL
SHAPE: CASUAL STRUCTURED
FABRIC: 97% POLYESTER / 3% SPANDEX
VISOR: PRECURVED
S-BAND: STAY-DRI

The ability to withstand wind and rain is a must in the oldest U.S. settlement on the Pacific Coast, but don't let that deter you from experiencing the natural beauty this cap's namesake has to offer. Whatever the elements throw your way, this seam-sealed crown will keep you dry and comfortable.

FEATURES:
 R-FLEX (2 SIZES)
 STAY-DRI SWEATBAND
 SEAM-SEALED CROWN



DECORATION:
 SUBLIMATED PATCH

SOLID COLORS: Undervisor is cap color.



932 NEW PCT AVAILABLE SPRING 2019

FIT: ADJUSTABLE HOOK-AND-LOOP
SHAPE: 5 PANEL UNSTRUCTURED
FABRIC: FLEX NYLON/POLYESTER
VISOR: PRECURVED
S-BAND: STAY-DRI

The Pacific Crest Trail covers 455.2 miles of natural Oregon beauty, and this cap was built for the duration; whether in a pack or on your head. Breathable mesh side panels, lightweight materials, and a soft packable visor make this cap perfect for backpacking, trail-running, or day hiking.

FEATURES:
 QUICK-DRYING BREATHABLE CROWN
 WATER RESISTANT NYLON MESH SIDE PANELS
 PACKABLE VISOR
 STAY-DRI SWEATBAND
 MICRO VELCRO + D-RING BACKSTRAP

 WATER REPELLENT

 WICKING



DECORATION:
WOVEN PATCH

SOLID COLORS: Undervisor is cap color.

SPLIT COLORS: First color is crown front panels, crown top panels, visor, and undervisor. Second color is crown side panels.



933 NEW BANDON AVAILABLE SPRING 2019

FIT: R-FLEX
SHAPE: CASUAL STRUCTURED
FABRIC: NYLON/POLYESTER
VISOR: PRECURVED
S-BAND: STAY-DRI

Wind. Water. Sun. Fun. You'll find all of that and more in this town on the southern Oregon coast. Whatever you crave, whether it's a day spent on the boardwalk, the beach, or the bay - this cap's a utility buddy.

FEATURES:
 CASUAL STRUCTURED
 WATER RESISTANT/BREATHABLE
 R-FLEX (2 SIZES)
 STAY-DRI SWEATBAND

 WATER REPELLENT

 WICKING



DECORATION:
WOVEN PATCH

SOLID COLORS: Undervisor is cap color.

SPLIT COLORS: First color is crown front panels, button, visor, and undervisor. Second color is crown back panels.



OUTDOOR PERFORMANCE

910 NEW SUNRIVER AVAILABLE SPRING 2019

- FIT:** FITTED
- SIZE:** SM-MD, MD-LG
- SHAPE:** WIDE-BRIM
- FABRIC:** NYLON
- VISOR:** FRONT: 3¾", BACK: 4¼"
- S-BAND:** STAY-DRI

With UPF 35+ fabric and a wide-brim, the 910 is specifically designed to protect you from the high-desert sunshine of central Oregon. From the putting greens to the river banks, this cap will help keep you cool and comfortable.

FEATURES:

- WIDE BRIMMED POLY W/ UPF SUN PROTECTION
- ADJUSTABLE / REMOVABLE CHIN STRAP
- STAY-DRI SWEATBAND



DECORATION:
WOVEN PATCH

COLORS: First color is crown and brim. Second color is eyelets, undervisor, and edge trimming on brim.



Charcoal/Black

Moss/Charcoal

White/Charcoal

934 NEW WILDWOOD AVAILABLE SPRING 2019

- FIT:** D-RING ADJ. HOOK-AND-LOOP
- SHAPE:** RELAXED UNSTRUCTURED
- FABRIC:** NYLON
- VISOR:** FLEX
- S-BAND:** STAY-DRI

The Wildwood Trail winds 27.9 miles within Portland's 5,200 acre Forest Park, creating a direct link between the city and the nature that surrounds it. This water resistant, packable cap will keep you dry on your adventures in the urban forest or your commute in the concrete jungle.

FEATURES:

- WATER RESISTANT
- PACKABLE VISOR
- STAY-DRI SWEATBAND
- MICRO VELCRO + D-RING BACKSTRAP



DECORATION:
SUBLIMATED PATCH

SOLID COLORS: Undervisor is cap color.



Black

Charcoal

Olive

Glacier Grey

937 NEW PIONEER AVAILABLE SPRING 2019

- FIT:** ADJUSTABLE PLASTIC SNAPBACK
- SHAPE:** FULL-PRO
- FABRIC:** WAXED/OIL CLOTH
- VISOR:** PRECURVED
- S-BAND:** COTTON

From the farm to the forest to the fishin' hole, this cap draws its inspiration from the pioneering spirit of the men and women who first settled and developed our state. The extra-large front panel and rugged waxed cotton fabric make this the perfect cap for any trailblazer.

- FEATURES:**
- 7 PANEL WAXED COTTON CROWN
- WATER RESISTANT
- SNAPBACK
- COTTON SWEATBAND

 **WATER REPELLENT**

 **UPF PROTECTION**



DECORATION:
EMBROIDERED PATCH

SOLID COLORS: Undervisor is cap color.



435 COOS BAY

- FIT:** ADJ. HOOK-AND-LOOP
- SHAPE:** RELAXED UNSTRUCTURED
- FABRIC:** WAXED/OIL CLOTH
- VISOR:** PRECURVED
- S-BAND:** COTTON

Home to lush forests, gorgeous secluded beaches, and Oregon's largest coastal city, the Coos Bay area is a prime destination for the outdoor enthusiast to don this traditional waxed cotton, all-weather cap.

- FEATURES:**
- 6 PANEL WAXED COTTON CROWN
- WATER RESISTANT
- SNAPBACK
- COTTON SWEATBAND

 **WATER REPELLENT**

 **UPF PROTECTION**



DECORATION:
SCREEN PRINTED PATCH

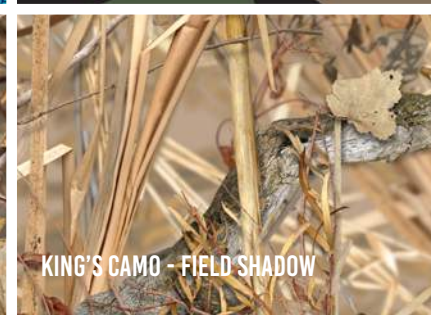
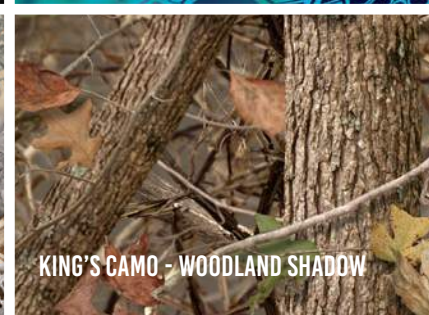
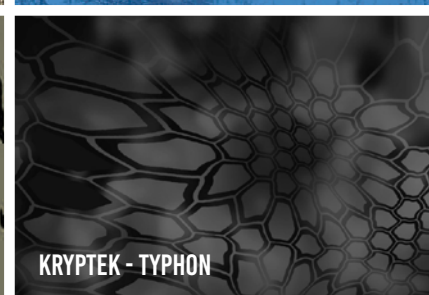
SOLID COLORS: Undervisor is cap color.





CAMO

Blend in or stand out.



112P PRINTED TRUCKER

FIT: ADJUSTABLE SNAPBACK
SHAPE: MID-PRO
FABRIC: TWILL/POLY MESH
VISOR: PRECURVED
S-BAND: COTTON



DECORATION:
LEATHER APPLIQUE

MOSSY OAK CAMO COLORS: First color is crown and visor camo, button, and eyelets. Second color is crown back mesh panels, backstrap, and contrast stitching on front panels and visor.



Break-Up Country/Black
NEW/SPRING 2019
Blades/Brown
NEW/SPRING 2019

REALTREE CAMO COLORS: First color is crown and visor camo, button, and eyelets. Second color is crown back mesh panels, backstrap, and contrast stitching on front panels and visor.



Edge/Neon Pink+ NEW
Edge/Neon Yellow NEW
Edge/Neon Orange NEW
Timber/Black NEW
Original/Black NEW
Max-1 XT/Brown NEW
Edge/Brown NEW
Fishing Light Blue/Navy NEW
Realtree Xtra Pink/White+ NEW
Max-5/Buck



Xtra/Neon Pink+
Xtra/Neon Yellow

KRYPTEK CAMO COLORS: First color is crown and visor camo, button, and eyelets. Second color is crown back mesh panels and contrast stitching on front panels and visor. **Kryptek Camo is 100% Polyester.**



Neptune/White
NEW/SPRING 2019
Neptune/Black
Highlander/Buck
Inferno/Black
Inferno/Blaze Orange
Typhon/Black
Typhon/Neon Orange
Typhon/Neon Pink+
Typhon/Neon Yellow
Pontus/White

MILITARY CAMO COLORS: First color is crown and visor camo, button, eyelets, undervisor, backstrap, and contrast stitching on back panels. Second color is crown back mesh.



Digital Camo/Light Green
Green Camo/Black
Green Camo/White

+ SMALL/LADIES SIZE ONLY.

874 STRUCTURED PERFORMANCE CAMO

FIT: ADJUSTABLE HOOK-AND-LOOP
SHAPE: CASUAL STRUCTURED
FABRIC: POLYESTER
VISOR: PRECURVED
S-BAND: STAY-DRI



DECORATION:
SCREEN PRINTED PATCH

COLORS: Undervisor is Charcoal.



Mossy Oak Break-Up Country NEW
Mossy Oak Blades NEW
Realtree Edge NEW
Realtree Fishing Light Blue NEW
Realtree Max-5
Kryptek Typhon
Kryptek Highlander
Kryptek Inferno
Kryptek Neptune
Kryptek Pontus

CAMO

862 MULTICAM® TRUCKER

FIT: ADJUSTABLE SNAPBACK
SHAPE: MID-PRO
FABRIC: 50/50 NYCO RIPSTOP/POLY MESH
VISOR: PRECURVED
S-BAND: COTTON

 NO BUTTON



DECORATION:
WOVEN PATCH

COLORS: First color is crown front panels/visor camo and eyelets. Second color is crown back mesh panels and backstrap. Contrast stitching on crown and visor. Undervisor is Black.



Original/Coyote Brown

Black/Black

863 STRUCTURED MULTICAM®

FIT: ADJUSTABLE HOOK-AND-LOOP
SHAPE: CASUAL STRUCTURED
FABRIC: 50/50 NYCO RIPSTOP
VISOR: PRECURVED
S-BAND: COTTON

 WATER REPELLENT

 NO BUTTON



DECORATION:
LEATHER APPLIQUE

COLORS: Undervisor is Black.



Original

Black

865 R-FLEX MULTICAM®

FIT: R-FLEX
SIZE: SM-MD (7-7¼), LG-XL (7¾-7⅞)
SHAPE: MID-PRO
FABRIC: 98% NYLON, 2% SPANDEX
VISOR: PRECURVED
S-BAND: COTTON

💧 WATER REPELLENT

🎧 NO BUTTON



DECORATION:
SUBLIMATED PATCH

COLORS: Undervisor is Black.



Original

111P GARMENT WASHED PRINTED TRUCKER

FIT: ADJUSTABLE SNAPBACK
SHAPE: RELAXED UNSTRUCTURED
FABRIC: TWILL/POLY MESH
VISOR: PRECURVED
S-BAND: COTTON



DECORATION:
LEATHER APPLIQUE

COLORS: First color is crown and visor camo, button, and eyelets. Second color is crown, crown back mesh panels and contrast stitching.



Mossy Oak Break-Up Country/Black **NEW**



Mossy Oak Blades/Brown **NEW**



Realtree Max-1 XT/Brown **NEW**



Realtree Edge/Brown **NEW**



Realtree Original/Black **NEW**



Realtree Timber/Black **NEW**



Realtree Max-5/Buck



Kryptek Highlander/Brown



Kryptek Typhon/Black



Green Camo/Black



Digital Camo/Light Green

CAMO

870 UNSTRUCTURED PERFORMANCE CAMO

FIT: ADJUSTABLE HOOK-AND-LOOP
SHAPE: RELAXED UNSTRUCTURED
FABRIC: POLYESTER
VISOR: PRECURVED
S-BAND: STAY-DRI



KRYPTEK
Inferno

DECORATION:
WOVEN PATCH

COLORS: Undervisor is Charcoal.



840 UNSTRUCTURED TWILL CAMO

FIT: ADJUSTABLE HOOK-AND-LOOP
SHAPE: RELAXED UNSTRUCTURED
FABRIC: TWILL
VISOR: PRECURVED
S-BAND: COTTON



DECORATION:
LEATHER APPLIQUE

COLORS: Undervisor is camo pattern. Digital Camo undervisor is Driftwood.



+ SMALL/LADIES SIZE ONLY.

843 STRUCTURED CAMO

FIT: ADJUSTABLE HOOK-AND-LOOP
SHAPE: CASUAL STRUCTURED
FABRIC: 100% COTTON TWILL
VISOR: PRECURVED
S-BAND: COTTON



DECORATION:
FAUX LEATHER APPLIQUE

COLORS: Undervisor is camo pattern. Digital Camo undervisor is Driftwood.



844 DUCK CLOTH FRONT W/ CAMO BACK

FIT: ADJUSTABLE HOOK-AND-LOOP
SHAPE: CASUAL STRUCTURED
FABRIC: CANVAS DUCK CLOTH/TWILL
VISOR: PRECURVED
S-BAND: COTTON



DECORATION:
STANDARD EMBROIDERY

COLORS: Undervisor matches top visor.



CAMO

846 CAMO CROWN W/ DUCK CLOTH VISOR

FIT: ADJ. HOOK-AND-LOOP | SHAPE: CASUAL STRUCTURED | FABRIC: CANVAS DUCK CLOTH/TWILL | VISOR: PRECURVED | S-BAND: COTTON



DECORATION:
WOVEN LABEL

COLORS: Undervisor is Black.



Realtree Max-1 XT/
Buck NEW



Realtree Edge/
Dark Olive NEW



Realtree Max-5/Buck



Kryptek Highlander/Buck



Kryptek Typhon/Black

855 CAMO AIRMESH R-FLEX

FIT: R-FLEX | SIZE: SM-MD (7-7¼), LG-XL (7¾-7%) | SHAPE: CASUAL STRUCTURED | FABRIC: COTTON-POLY/AIRMESH | VISOR: PRECURVED | S-BAND: COMFORT STRETCH

KRYPTTEK
Highlander



DECORATION:
EMBROIDERED PATCH

COLORS: Undervisor is Black.



Realtree Max-1 XT/
Brown NEW



Realtree Edge/
Brown NEW



Realtree Max-5/Buck



Kryptek Highlander/Buck



Kryptek Typhon/Black



Digital Camo/Light Green

848 CAMO ADJUSTABLE VISOR

FIT: ADJ. HOOK-AND-LOOP | SHAPE: VISOR 2¼" FRONT PANEL | FABRIC: TWILL | VISOR: PRECURVED | S-BAND: COTTON



DECORATION:
STANDARD EMBROIDERY

CAMO COLORS: Undervisor is cap color.



King's Camo
Desert Shadow



Realtree Xtra



Realtree Max-5



Kryptek Highlander



Kryptek Typhon



Digital Camo

847 STONE CROWN W/ CAMO VISOR

FIT: ADJ. HOOK-AND-LOOP | SHAPE: CASUAL STRUCTURED | FABRIC: BRUSHED CHINO/TWILL | VISOR: PRECURVED | S-BAND: COTTON



DECORATION:
3D EMBROIDERY

COLORS: Undervisor is camo pattern.



Stone/Realtree Edge
NEW

Stone/Realtree Max-5

Stone/Realtree Xtra

Stone/Kryptek
Highlander

Stone/Kryptek
Typhon

845 STRUCTURED CAMO R-FLEX

FIT: R-FLEX | SIZE: SM-MD (7-7¼), LG-XL (7¾-7¾) | SHAPE: CASUAL STRUCTURED | FABRIC: COTTON-POLY STRETCH | VISOR: PRECURVED | S-BAND: COMFORT STRETCH



DECORATION:
LEATHER APPLIQUE

COLORS: Undervisor is Loden. Digital Camo undervisor is Khaki.



Realtree Max-1

Realtree Max-5

Digital Camo

R93 R-SERIES STRUCTURED CAMO

FIT: ADJ. HOOK-AND-LOOP | SHAPE: CASUAL STRUCTURED | FABRIC: R-SERIES 100% COTTON TWILL | VISOR: PRECURVED | S-BAND: COTTON



DECORATION:
EMBROIDERED PATCH

COLORS: Undervisor is Black.



Upland

882 NEW BLAZE TRUCKER

FIT: ADJ. SNAPBACK | SHAPE: CASUAL STRUCTURED | FABRIC: POLY CANVAS/POLY MESH | VISOR: PRECURVED | S-BAND: COTTON



DECORATION:
SUBLIMATED PATCH

COLORS: Undervisor is Black.



Blaze

883 BLAZE CROWN W/ CAMO VISOR

FIT: ADJ. HOOK-AND-LOOP | SHAPE: CASUAL STRUCTURED | FABRIC: POLY CANVAS/TWILL | VISOR: PRECURVED | S-BAND: COTTON



DECORATION:
EMBROIDERED PATCH

COLORS: Undervisor is Black.



Blaze/Realtree Edge
NEW



Blaze/Realtree Original
NEW



Blaze/Realtree Timber
NEW



Blaze/Realtree Max-5



Blaze/Kryptek
Highlander



Blaze/Upland

884 BLAZE CROWN W/ DUCK CLOTH VISOR

FIT: ADJ. HOOK-AND-LOOP | SHAPE: CASUAL STRUCTURED | FABRIC: CANVAS DUCK CLOTH/COTTON-POLY | VISOR: PRECURVED | S-BAND: COTTON



DECORATION:
STANDARD EMBROIDERY

COLORS: Undervisor is Black.



Blaze/Buck

121 CAMO MICROFLEECE BEANIE

FIT: ONE SIZE FITS MOST | SHAPE: 6 TOPSEAM KNIT | FABRIC: 100% POLYESTER MICROFLEECE

KING'S CAMO
Desert Shadow



COLORS:



Mossy Oak Break-Up Country **NEW**



Realtree Edge **NEW**



Realtree Max-5 **NEW**



King's Camo Desert Shadow



King's Camo Field Shadow



King's Camo Woodland Shadow

DECORATION:
STANDARD EMBROIDERY

123 CAMO MICROFLEECE BEANIE W/ CUFF

FIT: ONE SIZE FITS MOST | SHAPE: 4 TOPSEAM KNIT | FABRIC: 92% POLYESTER MICROFLEECE/8% SPANDEX

KING'S CAMO
Desert Shadow



COLORS:



King's Camo Desert Shadow



King's Camo Woodland Shadow

DECORATION:
LEATHER APPLIQUE

133 FLEECE REVERSIBLE HUNTING BEANIE

FIT: ONE SIZE FITS MOST | SHAPE: 6 TOPSEAM KNIT | FABRIC: SHELL 1 = 92% POLYESTER MICROFLEECE/8% SPANDEX, SHELL 2 = 100% ACRYLIC

KING'S CAMO
Woodland Shadow



COLORS: Reversible.



Driftwood/Mossy Oak Break-Up Country **NEW**



Driftwood/Blaze Orange



Driftwood/King's Camo Woodland Shadow

DECORATION:
WOVEN CLIP LABEL



WOMEN

Trending styles and colors with lower profiles and more tailored fits.

115 LOW PRO TRUCKER

FIT: ADJUSTABLE SNAPBACK
SIZE: SM, MD-LG
SHAPE: CASUAL STRUCTURED
FABRIC: TWILL/POLY MESH
VISOR: PRECURVED
S-BAND: COTTON



DECORATION:
LEATHER APPLIQUE

NEW COLORS AVAILABLE
LATE WINTER 2018/19

SOLID COLORS: Undervisor is cap color. (VIEW ALL COLORWAYS ON PAGE 22)



Black

Loden

TRI-COLORS: First color is crown front panels and eyelets. Second color is back mesh panels and backstrap. Third color is visor and button.



Tan/Loden/Brown
NEW

White/Col Blue/Brown
NEW

White/Blue Hawaiian/
Pale Orange
NEW

Heather Grey/Birch/
Cardinal
NEW

Heather Grey/Birch/
Army Olive
NEW

Spruce/Birch/Light Navy
NEW

Blue Teal/Birch/Navy

Heather Grey/Birch/
Amber Gold

TRENDING SPLIT COLORS: First color is crown front panels, eyelets, visor, undervisor, and button. Second color is crown back mesh panels, and backstrap.



Black/White

Heather Grey/Dark
Charcoal

Chocolate Chip/Grey-
Brown

Red Heather/Light Grey

Charcoal/White

Hot Pink/Black

Smoke Blue/Aluminum

Royal/White

Lilac/Birch

Aruba Blue/Birch

115CH LOW PRO HEATHER TRUCKER

FIT: ADJUSTABLE SNAPBACK
SIZE: SM, MD-LG
SHAPE: CASUAL STRUCTURED
FABRIC: COTTON-POLY JERSEY/POLY MESH
VISOR: PRECURVED
S-BAND: COTTON



DECORATION:
SUBLIMATED PATCH

SPLIT COLORS: First color is crown front panels, eyelets, visor, undervisor, and button. Second color is crown back mesh panels and backstrap.



Navy Heather/Navy

Red Heather/Birch

Green Teal Heather/Birch

Black Heather/Black

213 LOW PRO FOAMIE TRUCKER

FIT: ADJUSTABLE SNAPBACK
SHAPE: CASUAL STRUCTURED
FABRIC: FOAM/POLY MESH
VISOR: PRECURVED
S-BAND: COTTON



DECORATION:
WOVEN PATCH

ALTERNATE COLORS: First color is crown front panels. Second color is back mesh panels, visor, visor cord, backstrap, and button.



White/Black/Black White/Navy/Navy

SPLIT COLORS: First color is crown front panels, visor, and button. Second color is crown back mesh panels and backstrap. Third color is visor cord.



Black/Charcoal/Black Charcoal/Black/Black Cyan/White/Red Brown/Tan/Khaki Dark Olive/Tan/Khaki Red/White/Royal Kelly/White/Yellow

221 LASER VENTED R-ACTIVE LITE

FIT: D-RING ADJUSTABLE HOOK-AND-LOOP
SIZE: SM, LG-XL
SHAPE: RELAXED UNSTRUCTURED
FABRIC: LIGHTWEIGHT PERFORMANCE
VISOR: PRECURVED
S-BAND: STAY-DRI



DECORATION:
POLY PRESS

COLORS: First color is cap. Second color is visor/back panel binding.



Black/White Red/White Sky Blue/White White/Charcoal Yellow/White

320 WASHED CHINO

FIT: ADJ. CLOTH BACKSTRAP WITH COMFORT BUCKLE
SIZE: SM (6½-7¼), MD-LG (7-7¾)
SHAPE: RELAXED UNSTRUCTURED
FABRIC: HEAVYWEIGHT CHINO TWILL
VISOR: PRECURVED
S-BAND: COTTON



DECORATION:
CHAIN STITCH EMBROIDERY

COLORS: Undervisor is cap color.



227 TECH MESH

FIT: D-RING ADJUSTABLE HOOK-AND-LOOP
SIZE: SM, LG-XL
SHAPE: CASUAL STRUCTURED
FABRIC: LIGHTWEIGHT PERF/TECH MESH
VISOR: PRECURVED
S-BAND: STAY-DRI PERFORMANCE



DECORATION:
POLY PRESS

SPLIT COLORS: First color is crown front, visor, button, back stripe, and backstrap. Second color is crown back mesh panels.



325 WASHED CHINO SANDWICH VISOR

FIT: ADJUSTABLE HOOK-AND-LOOP
SHAPE: RELAXED UNSTRUCTURED
FABRIC: HEAVYWEIGHT CHINO TWILL
VISOR: PRECURVED
S-BAND: COTTON



DECORATION:
 SUBLIMATED PATCH

(VIEW ALL COLORWAYS ON PAGE 38)

TRENDING COLORS:

+ SMALL/LADIES SIZE ONLY.



322 WASHED CHINO CHARCOAL

FIT: ADJUSTABLE HOOK-AND-LOOP
SHAPE: RELAXED UNSTRUCTURED
FABRIC: HEAVYWEIGHT CHINO TWILL
VISOR: PRECURVED
S-BAND: COTTON



DECORATION:
 STANDARD EMBROIDERY

(VIEW ALL COLORWAYS ON PAGE 39)

TRENDING COLORS:

+ SMALL/LADIES SIZE ONLY.



112P PRINTED TRUCKER

FIT: ADJUSTABLE SNAPBACK
SHAPE: MID-PRO
FABRIC: TWILL/POLY MESH
VISOR: PRECURVED
S-BAND: COTTON



DECORATION:
WOVEN PATCH

(VIEW ALL COLORWAYS ON PAGE 20)

TRENDING COLORS:



+ SMALL/LADIES SIZE ONLY.

111 GARMENT WASHED TRUCKER

FIT: ADJUSTABLE SNAPBACK
SHAPE: RELAXED UNSTRUCTURED
FABRIC: TWILL/POLY MESH
VISOR: PRECURVED
S-BAND: COTTON



DECORATION:
DISTRESSED EMBROIDERED PATCH
WOVEN CLIP LABEL

(VIEW ALL COLORWAYS ON PAGE 23)

TRENDING COLORS:



+ SMALL/LADIES SIZE ONLY.

141 CHUNK TWIST KNIT W/CUFF

FIT: ONE SIZE FITS MOST
SHAPE: SLOUCH
FABRIC: 100% ACRYLIC



DECORATION:
WOVEN CLIP LABEL

COLORS:



143 CHUNK POM BEANIE W/ CUFF

FIT: ONE SIZE FITS MOST
SHAPE: SLOUCH
FABRIC: 100% ACRYLIC



DECORATION:
WOVEN CLIP LABEL

COLORS:



145 SCRUNCH BEANIE

FIT: ONE SIZE FITS MOST
SHAPE: SLOUCH
FABRIC: 100% ACRYLIC



DECORATION:
WOVEN CLIP LABEL

COLORS:



138 CABLE KNIT BEANIE

FIT: ONE SIZE: SMALL
SHAPE: 4 TOPSEAM KNIT
FABRIC: 100% ACRYLIC



DECORATION:
WOVEN CLIP LABEL

COLORS:



148 HEATHERED POM BEANIE W/ CUFF

FIT: ONE SIZE FITS MOST
SHAPE: 6 TOPSEAM KNIT
FABRIC: 100% ACRYLIC



DECORATION:
STANDARD EMBROIDERY

COLORS:



Grey/Col Blue/Black



Grey/Gold/Black



Grey/Kelly/Black



Grey/Orange/Black



Grey/Purple/Black



Grey/Royal/Black



Grey/Red/Black



Grey/White/Black

134 POM BEANIE W/ CUFF

FIT: ONE SIZE FITS MOST
SHAPE: 6 TOPSEAM KNIT
FABRIC: 100% ACRYLIC



DECORATION:
3D EMBROIDERY

COLORS:



Black/Gold/White



Black/Grey/White



Black/Red/White



Cardinal/Black/White



Navy/Grey/White



Navy/Col Blue/White



Maroon/Black/White



Dark Green/Black/White



Navy/Red/White



Purple/Black/White



Red/Black/White



Royal/Black/White

137 HEATHERED BEANIE W/ CUFF

FIT: ONE SIZE FITS MOST
SHAPE: 4 TOPSEAM KNIT
FABRIC: 100% ACRYLIC

DECORATION:
WOVEN CLIP LABEL



COLORS:



Black



Heather Grey



Navy



Red



Royal

130 MARLED BEANIE

FIT: ONE SIZE FITS MOST
SHAPE: 6 TOPSEAM KNIT
FABRIC: 100% ACRYLIC

DECORATION:
FAUX LEATHER CLIP LABEL



COLORS:



Black/Grey/Charcoal



Navy/Grey/White



Olive/Khaki/Light Khaki



Pink/Grey/Light Pink



Red/Grey/Charcoal



Royal/Grey/Charcoal

131 2 STRIPE POM BEANIE

FIT: ONE SIZE FITS MOST
SHAPE: 6 TOPSEAM KNIT
FABRIC: 100% ACRYLIC

DECORATION:
WOVEN PATCH



COLORS:



Black/White/Grey



Black/White/Red



Cardinal/White/Black



Navy/White/Grey



Navy/White/Cel Blue



Maroon/White/Black



Dark Green/White/Black



Navy/White/Red



Red/White/Black



Royal/White/Black

145 SCRUNCH BEANIE

FIT: ONE SIZE FITS MOST
SHAPE: SLOUCH
FABRIC: 100% ACRYLIC

DECORATION:
WOVEN CLIP LABEL



COLORS:



Birch



Black



Burgundy



Coral



Heather/Charcoal



Heather/Grey



Navy



Rust



Wheat

141 CHUNK TWIST KNIT BEANIE W/ CUFF

FIT: ONE SIZE FITS MOST
SHAPE: SLOUCH
FABRIC: 100% ACRYLIC

DECORATION:
WOVEN CLIP LABEL



COLORS:



Black



Burgundy



Cream/Mocha



Heather/Charcoal



Heather Grey/Rust



Seafoam



Stone/Navy



Wheat

143 CHUNK POM BEANIE W/ CUFF

FIT: ONE SIZE FITS MOST
SHAPE: SLOUCH
FABRIC: 100% ACRYLIC

DECORATION:
WOVEN CLIP LABEL



COLORS:



Black



Burgundy



Cream/Mocha



Heather Charcoal



Heather Grey/Rust



Heather Grey



Navy



Stone/Navy



Wheat

147 SLOUCH KNIT BEANIE

FIT: ONE SIZE FITS MOST

SHAPE: SLOUCH

FABRIC: 100% ACRYLIC

DECORATION:
WOVEN CLIP LABEL



COLORS:



149 SUPER SLOUCH KNIT BEANIE

FIT: ONE SIZE FITS MOST

SHAPE: SLOUCH

FABRIC: 100% ACRYLIC

DECORATION:
WOVEN CLIP LABEL



COLORS:



146 WAFFLE KNIT W/ CUFF

FIT: ONE SIZE FITS MOST
SHAPE: 4 TOPSEAM KNIT
FABRIC: 100% ACRYLIC

DECORATION:
FAUX LEATHER
CLIP LABEL



COLORS:



Birch



Black



Burgundy



Coral



Heather Charcoal



Heather Grey



Navy



Rust



Wheat

127 MELANGE BEANIE

FIT: ONE SIZE FITS MOST
SHAPE: 6 TOPSEAM KNIT
FABRIC: 100% ACRYLIC

DECORATION:
SUBLIMATED PATCH



COLORS:



Black/Grey



Dark Green/Grey



Navy/Grey



Purple/Grey



Red/Grey



Royal/Grey



Brown/Grey



Charcoal/Grey



Oatmeal/Grey

132 JACQUARD CAMO BEANIE

FIT: ONE SIZE FITS MOST
SHAPE: 6 TOPSEAM KNIT
FABRIC: 100% ACRYLIC

DECORATION:
WOVEN CLIP LABEL



COLORS:



Dark Green/Charcoal



Grey/Charcoal



Navy/Charcoal



Purple/Charcoal



Red/Charcoal



Royal/Charcoal



White/Charcoal

138 CABLE KNIT BEANIE

FIT: ONE SIZE FITS MOST
SHAPE: 6 TOPSEAM KNIT
FABRIC: 100% ACRYLIC

DECORATION:
WOVEN CLIP LABEL



COLORS:



Black



Heather Grey



Lavender



Navy



Pink



Royal



Red



Sand

117 RIB KNIT BEANIE

FIT: ONE SIZE FITS MOST
SHAPE: 6 TOPSEAM KNIT
FABRIC: 100% ACRYLIC

DECORATION:
 STANDARD EMBROIDERY



COLORS:



119 RIB KNIT BEANIE W/ CUFF

FIT: ONE SIZE FITS MOST
SHAPE: 6 TOPSEAM KNIT
FABRIC: 100% ACRYLIC

DECORATION:
 WOVEN CLIP LABEL



COLORS:



R15 R-SERIES SOLID BEANIE

FIT: ONE SIZE FITS MOST
SHAPE: 4 TOPSEAM KNIT
FABRIC: R-SERIES 100% ACRYLIC



DECORATION:
STANDARD EMBROIDERY



COLORS:



R16 R-SERIES 2 COLOR BEANIE

FIT: ONE SIZE FITS MOST
SHAPE: 4 TOPSEAM KNIT
FABRIC: 100% ACRYLIC



DECORATION:
WOVEN CLIP LABEL



COLORS:



R18 R-SERIES SOLID BEANIE W/ CUFF

FIT: ONE SIZE FITS MOST
SHAPE: 4 TOPSEAM KNIT
FABRIC: R-SERIES 100% ACRYLIC



DECORATION:
 WOVEN CLIP LABEL



COLORS:



R19 R-SERIES 2 COLOR BEANIE W/ CUFF

FIT: ONE SIZE FITS MOST
SHAPE: 4 TOPSEAM KNIT
FABRIC: 100% ACRYLIC



DECORATION:
 SUBLIMATED PATCH



COLORS:



144 POLARTEC® POWER STRETCH BEANIE

FIT: ONE SIZE FITS MOST | SHAPE: STYLIZED SEAM CONSTRUCTION | FABRIC: POLARTEC POWER STRETCH MICROFLEECE



DECORATION:
STANDARD EMBROIDERY

COLORS:



Black



Charcoal

142 POLARTEC® MICROFLEECE HEADBAND

FIT: ONE SIZE FITS MOST | SHAPE: HEADBAND | FABRIC: POLARTEC POWER STRETCH MICROFLEECE



DECORATION:
STANDARD EMBROIDERY

COLORS:



Black



Charcoal

120 POLARTEC® BASIC BEANIE

FIT: ONE SIZE FITS MOST | SHAPE: 4 TOPSEAM KNIT | FABRIC: POLARTEC POWER STRETCH MICROFLEECE



DECORATION:
STANDARD EMBROIDERY

COLORS:



Black



Charcoal

R20 R-SERIES MICROFLEECE BEANIE

FIT: ONE SIZE FITS MOST
SHAPE: 4 TOPSEAM KNIT
FABRIC: R-SERIES 100% POLYESTER



DECORATION:
STANDARD EMBROIDERY



COLORS:



R22 R-SERIES MICROFLEECE HEADBAND

FIT: ONE SIZE FITS MOST
SHAPE: HEADBAND
FABRIC: R-SERIES 100% POLYESTER



DECORATION:
STANDARD EMBROIDERY

COLORS:



121 CAMO MICROFLEECE BEANIE

FIT: ONE SIZE FITS MOST
SHAPE: 4 TOPSEAM KNIT
FABRIC: 100% POLYESTER MICROFLEECE

DECORATION:
STANDARD EMBROIDERY



MOSSY OAK AVAILABLE SPRING 2019

COLORS:



Mossy Oak Break-Up Country **NEW**
Realtree Edge **NEW**
Realtree Max5 **NEW**
King's Camo Desert Shadow
King's Camo Field Shadow
King's Camo Woodland Shadow

123 CAMO MICROFLEECE BEANIE W/ CUFF

FIT: ONE SIZE FITS MOST
SHAPE: 4 TOPSEAM KNIT
FABRIC: 100% POLYESTER MICROFLEECE

DECORATION:
LEATHER APPLIQUE



COLORS:



King's Camo Desert Shadow
King's Camo Woodland Shadow

712 TRUCKER VISOR

FIT: ADJUSTABLE SNAPBACK
SHAPE: VISOR 2¼" FRONT PANEL
FABRIC: TWILL/POLY MESH
VISOR: PRECURVED
S-BAND: COTTON



DECORATION:
STANDARD EMBROIDERY

COLORS: First color is crown and visor. Second color is mesh, backstrap, and contrast stitching.



740 PRO MESH VISOR

FIT: ADJUSTABLE HOOK-AND-LOOP
SIZE: SM, MD-LG
SHAPE: VISOR 2¼" FRONT PANEL
FABRIC: PRO MESH
VISOR: PRECURVED
S-BAND: COTTON



DECORATION:
STANDARD EMBROIDERY

SOLID VISOR COLORS: Undervisor is cap color.



COMBINATION COLORS: First color is crown. Second color is visor and undervisor.



VISORS

775 CHARCOAL FRONT W/ CONTRAST STITCHING

FIT: ADJUSTABLE HOOK-AND-LOOP
SHAPE: VISOR 2¼" FRONT PANEL
FABRIC: 100% COTTON TWILL
VISOR: PRECURVED
S-BAND: COTTON



DECORATION:
STANDARD EMBROIDERY

COLORS: First color is front panel, upper visor panel insert, and undervisor. Second color is side panels, backstrap and outer visor trim. All colors have white contrast stitching.



715 CLASSIC GOLF VISOR

FIT: ADJUSTABLE CLOTH BACKSTRAP
SHAPE: VISOR 3" FRONT PANEL
FABRIC: HEAVYWEIGHT CHINO TWILL
VISOR: PRECURVED
S-BAND: STAY-DRI



DECORATION:
POLY PRESS

COLORS: Undervisor is Charcoal.



SIDE EMBROIDERY NOT AVAILABLE

707 PULSE VISOR W/ PRO MESH

FIT: ADJ. HOOK-AND-LOOP | SHAPE: VISOR 2 1/4" FRONT PANEL | FABRIC: PERFORMANCE/PRO MESH | VISOR: PRECURVED | S-BAND: STAY-DRI



DECORATION:
STANDARD EMBROIDERY

COLORS: Undervisor is Charcoal.



159 R-ACTIVE LITE RUNNING VISOR

FIT: ADJ. HOOK-AND-LOOP | SHAPE: VISOR 2" FRONT PANEL | FABRIC: LTWT PERFORMANCE | VISOR: PRECURVED | S-BAND: STAY-DRI



DECORATION:
STANDARD EMBROIDERY

COLORS: First color is crown, visor, and undervisor. Second color is visor and side insert.



160 R-ACTIVE LITE OUTDOORS VISOR

FIT: ADJ. HOOK-AND-LOOP | SHAPE: VISOR 2" FRONT PANEL | FABRIC: LTWT PERFORMANCE | VISOR: PRECURVED | S-BAND: STAY-DRI



DECORATION:
STANDARD EMBROIDERY

COLORS: Undervisor is Charcoal.



708 DRYVE COLOR SPLIT VISOR

FIT: ADJ. HOOK-AND-LOOP | SIZE: SM, MD/LG | SHAPE: VISOR 2" FRONT PANEL | FABRIC: PERF MICRO MESH | VISOR: PRECURVED | S-BAND: STAY-DRI



DECORATION:
STANDARD EMBROIDERY

COLORS: First color is front panels and visor. Second color is side and back panels. Third color is color blocking. Undervisor is Charcoal.



SIDE EMBROIDERY NOT AVAILABLE

R45 R-SERIES GARMENT WASHED VISOR

FIT: ADJ. HOOK-AND-LOOP | SHAPE: VISOR 2 1/4" FRONT PANEL | FABRIC: R-SERIES 100% COTTON TWILL | VISOR: PRECURVED | S-BAND: COTTON



DECORATION:
STANDARD EMBROIDERY

SOLID VISOR COLORS: Undervisor is cap color.



848 CAMO ADJUSTABLE VISOR

FIT: ADJ. HOOK-AND-LOOP | SHAPE: VISOR 2 1/4" FRONT PANEL | FABRIC: TWILL | VISOR: PRECURVED | S-BAND: COTTON



DECORATION:
STANDARD EMBROIDERY

CAMO COLORS: Undervisor is cap color.





BRIMMED

Functional sun protection for the great outdoors.

810 R-ACTIVE LITE WIDE BRIM HAT

FIT: ONE SIZE FITS MOST
SHAPE: WIDE BRIM
FABRIC: LTWT PERFORMANCE
VISOR: 2½" BRIM
S-BAND: STAY-DRI



DECORATION:
WOVEN LABEL



COLORS: All colorways have charcoal eyelets, undervisor, and edge trimming on brim.



910 NEW SUNRIVER AVAILABLE SPRING 2019

FIT: FITTED
SIZE: SM-MD, MD-LG
SHAPE: WIDE-BRIM
FABRIC: NYLON
VISOR: FRONT: 3¾", BACK: 4¼"
S-BAND: STAY-DRI



DECORATION:
WOVEN PATCH



COLORS: First color is crown and brim. Second color is eyelets, undervisor, and edge trimming on brim.



BRIMMED

812 BUCKET HAT W/ 2 COLOR BAND

SIZE: MD (7¼), LG (7½)
SHAPE: BUCKET
FABRIC: COTTON-POLY
VISOR: 2¼" BRIM
S-BAND: COTTON

DECORATION:
WOVEN PATCH



COLORS: Undervisor is cap color.



White/Black



White/Dark Green



White/Red

827 WATERMAN

SIZE: ONE SIZE FITS MOST
SHAPE: RANCH
FABRIC: 100% STRAW
VISOR: 4½" BRIM
S-BAND: COMFORT STRETCH

DECORATION:
SUBLIMATED PATCH



COLORS: Undervisor is Khaki.



Straw

822 STRAW SAFARI HAT

FIT: ONE SIZE FITS MOST | SHAPE: SAFARI | FABRIC: 100% SEAGRASS STRAW | VISOR: 3" BRIM | S-BAND: COMFORT STRETCH

DECORATION:
STANDARD EMBROIDERY



COLORS: Undervisor is Khaki.



824 CLASSIC GAMBLER HAT

FIT: ONE SIZE FITS MOST | SHAPE: SAFARI | FABRIC: 100% TOYO STRAW | VISOR: 3" BRIM | S-BAND: COMFORT STRETCH

DECORATION:
STANDARD EMBROIDERY



COLORS: Undervisor is Khaki.



826 TWO-TONE GAMBLER HAT

FIT: ONE SIZE FITS MOST | SHAPE: SAFARI | FABRIC: 100% TOYO STRAW | VISOR: 3" BRIM | S-BAND: COMFORT STRETCH

DECORATION:
STANDARD EMBROIDERY



COLORS: Undervisor is Khaki.



R-SERIES

Value done right.

R55 GARMENT WASHED TWILL

FIT: ADJUSTABLE CLOTH HIDEAWAY
SHAPE: RELAXED UNSTRUCTURED
FABRIC: 100% COTTON TWILL
VISOR: PRECURVED
S-BAND: COTTON



DECORATION:
STANDARD EMBROIDERY

COLORS: Undervisor is cap color.



R65 UNSTRUCTURED TWILL

FIT: ADJUSTABLE HOOK-AND-LOOP
SHAPE: RELAXED UNSTRUCTURED
FABRIC: R-SERIES 100% COTTON TWILL
VISOR: PRECURVED
S-BAND: COTTON



DECORATION:
STANDARD EMBROIDERY

COLORS: Undervisor is cap color.



R66 UNSTRUCTURED SANDWICH VISOR

FIT: ADJUSTABLE CLOTH HIDEAWAY
SHAPE: RELAXED UNSTRUCTURED
FABRIC: R-SERIES 100% COTTON TWILL
VISOR: PRECURVED
S-BAND: COTTON



DECORATION:
STANDARD EMBROIDERY

COLORS: First color is cap. Second color is visor insert. Undervisor is cap color.



R78 STRUCTURED SANDWICH VISOR

FIT: ADJUSTABLE HOOK-AND-LOOP
SHAPE: CASUAL STRUCTURED
FABRIC: R-SERIES 100% COTTON TWILL
VISOR: PRECURVED
S-BAND: COTTON



DECORATION:
FAUX LEATHER APPLIQUE

COLORS: First color is crown, button, visor, and undervisor. Second color is visor insert and eyelets.



R-SERIES

R75 STRUCTURED TWILL

FIT: ADJUSTABLE HOOK-AND-LOOP
SHAPE: CASUAL STRUCTURED
FABRIC: R-SERIES 100% COTTON TWILL
VISOR: PRECURVED
S-BAND: COTTON



DECORATION:
EMBROIDERED PATCH

COLORS: Undervisor is cap color.



R45 GARMENT WASHED VISOR

FIT: ADJUSTABLE HOOK-AND-LOOP
SHAPE: VISOR 2 1/4" FRONT PANEL
FABRIC: 100% COTTON TWILL
VISOR: PRECURVED
S-BAND: COTTON



DECORATION:
STANDARD EMBROIDERY

COLORS: Undervisor is cap color.



R70 STRUCTURED TWILL R-FLEX

FIT: R-FLEX | SIZE: ONE SIZE FITS MOST | SHAPE: CASUAL STRUCTURED | FABRIC: COTTON STRETCH | VISOR: PRECURVED | S-BAND: COTTON



DECORATION:
DISTRESSED
EMBROIDERED PATCH

COLORS: Undervisor is cap color.



Black

Navy

Stone

White

R80 REFLECTIVE TRIM

FIT: ADJ. HOOK-AND-LOOP | SHAPE: CASUAL STRUCTURED | FABRIC: POLY-CANVAS | VISOR: PRECURVED | S-BAND: COTTON



DECORATION:
STANDARD EMBROIDERY

COLORS: Undervisor is Black.



Safety Green

R93 STRUCTURED CAMO

FIT: ADJ. HOOK-AND-LOOP | SHAPE: CASUAL STRUCTURED | FABRIC: 100% COTTON TWILL | VISOR: PRECURVED | S-BAND: COTTON



DECORATION:
3D EMBROIDERY

COLORS: Undervisor is Black.



Upland Camo

R15 SOLID BEANIE

FIT: ONE SIZE FITS MOST | SHAPE: 4 TOP SEAM KNIT | FABRIC: 100% POLYESTER

DECORATION:
STANDARD EMBROIDERY



COLORS:



R16 TWO COLOR BEANIE

FIT: ONE SIZE FITS MOST | SHAPE: 4 TOP SEAM KNIT | FABRIC: 100% ACRYLIC

DECORATION:
STANDARD EMBROIDERY



TWO-COLORS: First color is beanie. Second color is bottom stripe.



R18 SOLID BEANIE W/CUFF

FIT: ONE SIZE FITS MOST | SHAPE: 4 TOP SEAM KNIT | FABRIC: 100% ACRYLIC

DECORATION:
SUBLIMATED PATCH



COLORS:



R19 TWO COLOR BEANIE W/CUFF

FIT: ONE SIZE FITS MOST | SHAPE: 4 TOP SEAM KNIT | FABRIC: 100% ACRYLIC

DECORATION:
STANDARD EMBROIDERY



TWO-COLORS: First color is beanie. Second color is cuff.



R20 MICROFLEECE BEANIE

FIT: ONE SIZE FITS MOST | SHAPE: 4 TOP SEAM KNIT | FABRIC: 100% POLYESTER

DECORATION:
STANDARD EMBROIDERY



COLORS:



R22 MICROFLEECE HEADBAND

FIT: ONE SIZE FITS MOST | SHAPE: HEADBAND | FABRIC: 100% POLYESTER

DECORATION:
STANDARD EMBROIDERY



COLORS:



R DISPLAYS

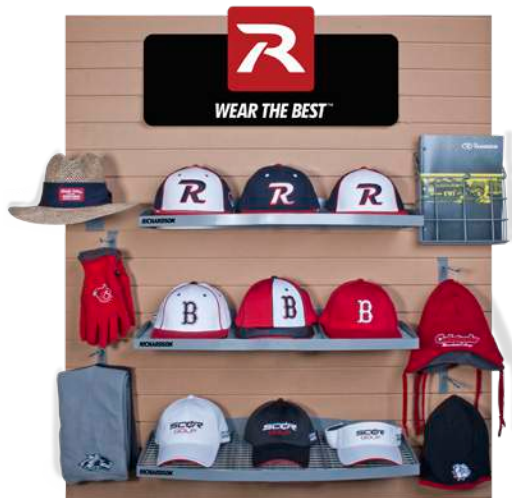
A wide range of quality displays to showcase Richardson caps.



PREMIUM
6 SHELF FLOOR DISPLAY



PREMIUM
3 SHELF COUNTER DISPLAY



3 SHELF SLATWALL DISPLAY



STANDARD
6 SHELF FLOOR DISPLAY

INDEX

STYLE#	PAGE
PTS20	2
PTS20Y	2
PTS20M NEW	3
PTS30	4
PTS40	5
PTS65	3
R15	78,94
R16	78,94
R18	79,94
R19	79,95
R20	81,95
R22	81,95
R45	86,92
R55	90
R65	90
R66	91
R70	93
R75	92
R78	91
R80	93
R93	61,93
110	24
111	23,68
111P	23,57
112	18,19
112FP	21
112P	17,20,55,68
112PM NEW	21
113	25,44
115	22,64
115CH	22,64
117	77
119	77
120	80
121	63,82
123	63,82
127	75
130	71
131	72
132	76
133	63
134	70
137	71
138	69,76
141	69,73
142	80
143	69,73
144	80
145	69,72
146	75
147	74
148	70
149	74
150	33
155	33
158	33
159	85
160	85

STYLE#	PAGE
162	29
163	14
165	9,29
168	26,45
172	7,27
174	14,28
177	16
178	17
185	8
203	35
212	11
213	25,44,65
214	11
217 NEW	49
220	31
221	30,65
222	28,32
225	31
227	30,66
236	40
245	17
252 NEW	43
253 NEW	48
255 NEW	43
256 NEW	48
257 NEW	45
265	35
275	16
309	34
312	34
320	37,66
320T	37
321	38
322	39,67
324 NEW	36
325	38,67
330	39
380	40
382 NEW	36
402	15,32
414	10
420	13
425	13
430s5	12
432	12
435	53
439	15
440s5	12
445	12
453	13
455	12
457	13
465s5	13
467s5	13
475	13
477	13
485	13
487	13

STYLE#	PAGE
495	10
510	41
511	26,42
514	6
520	12
525	12
530	12
533	12
535	12
540	12
543	12
545	12
550	12
555	12
585	9
633	12
643	12
653	12
707	85
708	86
712	83
715	84
740	83
775	84
810	16,87
812	88
822	89
824	89
826	89
827	88
840	58
843	59
844	59
845	61
846	60
847	61
848	60,86
855	60
862	56
863	56
865	57
870	58
874	55
882 NEW	62
883	62
884	62
910 NEW	52,87
930 NEW	47
931 NEW	47
932 NEW	51
933 NEW	51
934 NEW	52
935 NEW	50
936 NEW	50
937 NEW	53
PROMOTIONAL	96